

## Oil circulation sights

### Technopolymer

#### MATERIAL

Transparent polyamide based (PA-T) technopolymer. Avoid contact with alcohol or detergents containing alcohol.

#### PACKING RING

NBR synthetic rubber.

#### MAXIMUM CONTINUOUS WORKING TEMPERATURE

100°C.

#### TECHNICAL DATA

The tightening torque indicated in the table guarantees an optimal tightness, keeping the packing ring in the correct position.

#### NOTE

For use with other fluids with special additives, please contact ELESA Sales Department.

#### ACCESSORIES ON REQUEST

Brass nut type GH. (see page 1743) for fitting to reservoirs with wall thickness smaller than 5 mm.



ELESA Original design

## Oil circulation sights

### Technopolymer

#### MATERIAL

Transparent polyamide based (PA-T) technopolymer. Avoid contact with alcohol or detergents containing alcohol.

#### CIRCLE FOR OIL LEVEL CHECK

Delimited by a small red coloured externally tampprinted circle. Tampprinting resistant to oils with additives, greases, alkali and white spirit; resistant to abrasions under normal working conditions. Avoid contact with solvents, alcohol or detergents containing alcohol.

#### PACKING RING

NBR synthetic rubber.

#### MAXIMUM CONTINUOUS WORKING TEMPERATURE

100°C.

#### TECHNICAL DATA

The tightening torque indicated in the table guarantees an optimal tightness, keeping the packing ring in the correct position.

#### NOTE

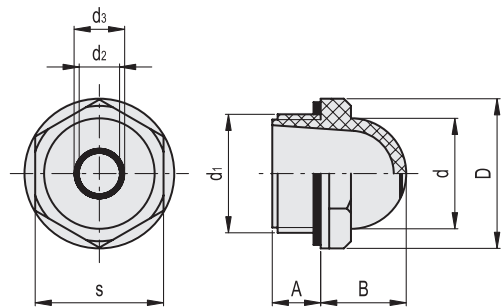
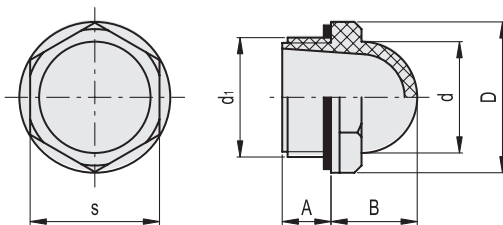
For use with other fluids with special additives, please contact ELESA Sales Department.

#### ACCESSORIES ON REQUEST

Brass nut type GH. (see page 1743) for fitting to reservoirs with wall thickness smaller than 5 mm.



ELESA Original design



Code	Description	d1	A	B	D	d	s	Tightening torque [Nm]	⚖️
10851	HCFE.12-3/8	G 3/8	7.5	13	22.5	15	19	3÷5	4
10901	HCFE.15-1/2	G 1/2	10.5	16	26	19	22	4÷6	5
11001	HCFE.20-3/4	G 3/4	10.5	19.5	31.5	25	27	6÷8	8
11101	HCFE.24-1	G 1	11	24	42	31	36	8÷10	18
11111	HCFE.30-1¼	G 1 ¼	11.5	26.5	46.5	38	40.5	12÷15	22

Code	Description	d1	A	B	D	d	d2	d3	s	Tightening torque [Nm]	⚖️
10906	HCFE.15/C-1/2	G 1/2	10.5	16	26	19	6	7	22	4÷6	5
11006	HCFE.20/C-3/4	G 3/4	10.5	19.5	31.5	25	11	12	27	6÷8	8
11106	HCFE.24/C-1	G 1	11	24	42	31	14	15	36	8÷10	18

