

Plugs

Technopolymer

MATERIAL

Polyamide based (PA) technopolymer, black colour, matte finish.

PACKING RING

NBR synthetic rubber.

MAXIMUM CONTINUOUS WORKING TEMPERATURE

100°C.

SPECIAL EXECUTIONS ON REQUEST

Words, marks and graphic symbols can be tamproprinted on the cap.

Plugs

with hexagon socket, technopolymer

MATERIAL

Glass-fibre reinforced polyamide based (PA) technopolymer, black colour, matte finish.

PACKING RING

NBR synthetic rubber.

MAXIMUM CONTINUOUS WORKING TEMPERATURE

100°C.

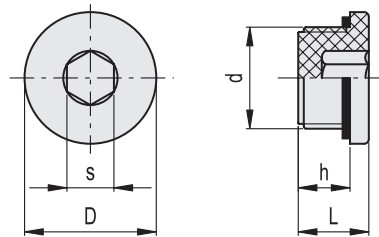
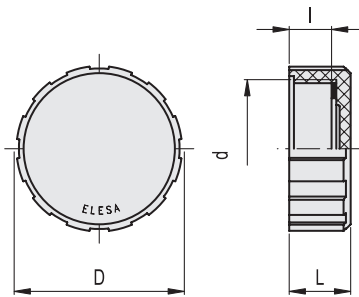
TECHNICAL DATA

The tightening torque indicated in the table guarantees an optimal tightness, keeping the packing ring in the correct position.



ELESA Original design

ELESA Original design



Code	Description	d	l	D	L	⚖️
58231	T.470-60x2	M60x2	18	70	26	55
58251	T.470-1	G 1	11	42	16	17
58281	T.470-2	G 2	18	70	26	58

Code	Description	d	h	s	D	L	Tightening torque [Nm]	⚖️
161033	TCE.1/4	G 1/4	9	6	20	12	3	4
161034	TCE.3/8	G 3/8	9	8	22	13	3÷5	5
161035	TCE.1/2	G 1/2	11	10	28	15	3÷4	8
161036	TCE.3/4	G 3/4	12	12	32	16.5	3÷5	14

