

Cabinet U-Handles

Aluminum

SPECIFICATION

Aluminum

- Powder coated, textured finish
 - Black, RAL 9005, UV-resistant **SW**
 - Red, RAL 3000 **RS**
 - Silver, RAL 9006 **SR**
- Powder coated, antimicrobial finish
 - Black, RAL 9005 **SMA**
 - White, RAL 9016 **WSA**
- Anodized, natural color **EL**
- Plain finish, tumbled **BL**



INFORMATION

Cabinet U-handles GN 565 are manufactured from a bent aluminum profile and have excellent stability and ergonomic design.

In addition to the standard surfaces, these cabinet U-handles are also available with a functional coating.

The **SW** version is coated with a highly weather-resistant and UV-resistant powder coating system, making this version excellent for outdoor use.

The **SMA / WSA** versions have a powder coating based on silver ions, which gives them antimicrobial properties. The principle of action has been shown to reduce the contamination of the handle surfaces within 24 hours so that fewer than 1% of bacteria and fewer than 5% of viruses ultimately survive.

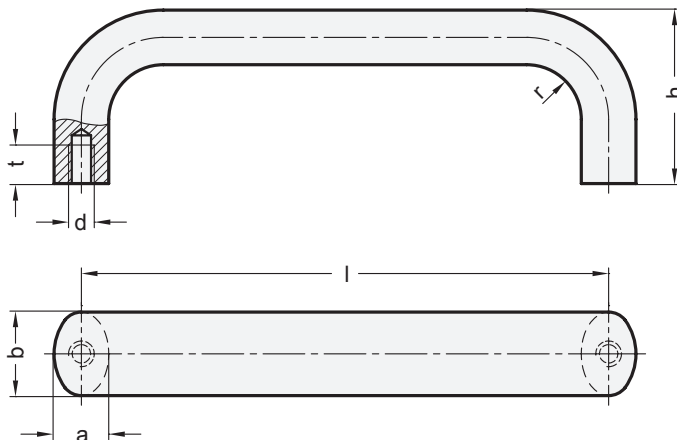
Standard parts with antimicrobial powder coating are primarily used in the health care sector and in public buildings, such as airports, train stations, stadiums, etc.

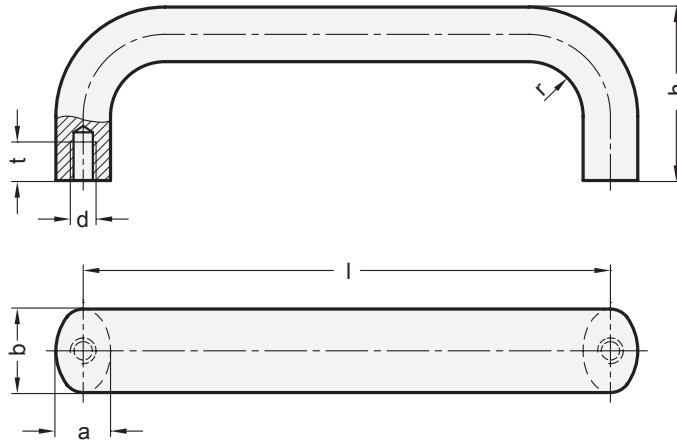
ACCESSORY

- GN 181 Fastening Sets (Mounting from the Operator's Side) (see page 488)

TECHNICAL INFORMATION

- Load Rating Information (see page A35)





* Complete with

- SW**
RAL 9005
- RS**
RAL 3000
- SR**
RAL 9006
- SMA**
RAL 9005, antimicrobial
- WSA**
RAL 9016, antimicrobial
- EL**
Anodized
- BL**
Plain, tumbled

GN 565

Description	b	Length l	a	d	h	r	t min.	⚖
GN 565-20-100-*	20	100	13	M 6	49	13	10	87
GN 565-20-112-*	20	112	13	M 6	49	13	10	93
GN 565-20-117-*	20	117***	13	M 6	49	13	10	100
GN 565-20-120-*	20	120**	13	M 6	49	13	10	102
GN 565-20-128-*	20	128	13	M 6	51	13	10	103
GN 565-20-160-*	20	160	13	M 6	51	13	10	120
GN 565-20-180-*	20	180**	13	M 6	51	13	10	128
GN 565-20-200-*	20	200***	13	M 6	51	13	10	150
GN 565-20-235-*	20	235**	13	M 6	51	13	10	180
GN 565-26-112-*	26	112***	17	M 8	55	17	12	164
GN 565-26-117-*	26	117***	17	M 8	55	17	12	166
GN 565-26-120-*	26	120***	17	M 8	55	17	12	171
GN 565-26-125-*	26	125***	17	M 8	55	17	12	178
GN 565-26-128-*	26	128	17	M 8	55	17	12	180
GN 565-26-160-*	26	160	17	M 8	57	17	12	212
GN 565-26-179-*	26	179***	17	M 8	57	17	12	235
GN 565-26-192-*	26	192	17	M 8	57	17	12	241
GN 565-26-300-*	26	300	17	M 8	57	17	12	344
GN 565-26-400-*	26	400***	17	M 8	57	17	12	445
GN 565-26-500-*	26	500***	17	M 8	57	17	12	538
GN 565-35-250-*	35	250	25	M 10	75	25	15	629
GN 565-35-300-*	35	300	25	M 10	75	25	15	722
GN 565-35-400-*	35	400	25	M 10	75	25	15	907
GN 565-35-500-*	35	500	25	M 10	75	25	15	1095

Weight SW

** Suitable for 19" rack and enclosure layout, not available for WSA/SMA

*** Not available for WSA/SMA

