

Breather caps

Technopolymer, high filtration, with valve, splash guard and flat dipstick

COVER

Polyamide-based (PA) technopolymer, black colour RAL 9005, matte finish, laser engraved graphic symbols.

THREADED FITTING

Polyamide-based (PA) technopolymer, with splash guard and hexagon nut, black colour, semi-matte finish.

PACKING RING

NBR synthetic rubber flat washer.

OVERPRESSURE VALVE

Technopolymer with NBR synthetic rubber O-ring
Stainless steel spring, set at around 0.350 bar or 0.700 bar.

AIR FILTER

Polyester with a filtration rate of $3\mu\text{m}$ (efficiency > 98%).

FLAT DIPSTICK

Flat section phosphated steel (maximum visibility of the fluid level).
On request and for sufficient quantities dipstick can be supplied in different lengths and/or complete with MAX-MIN level lines.

STANDARD EXECUTIONS

- **SFV-AF-350MB+a**: valve opens when pressure exceeds 0.350 bar (set at 350 mb).
- **SFV-AF-700MB+a**: valve opens when pressure exceeds 0.700 bar (set at 700 mb).

MAXIMUM CONTINUOUS WORKING TEMPERATURE

100°C.

FEATURES

SFV-AF (registered design) breather caps are suitable for all applications (gearmotors, variators or compressors) in which the internal pressure of the tank must not exceed a certain value (350 or 700 mb).

In these cases, the safety valve of the cap allows the expulsion of the exceeding air in the reservoir, thus re-establishing the pressure values for which the valve is set.

Valve (closed in normal pressure conditions) prevents dust from getting in and oil-losses.

SFV-AF breather caps are made with a special internal geometry which stops the leakage of the fluid to the outside, even in the most critical cases of strong fluid projections.

The hexagon on the threaded fitting makes it possible to apply, using a wrench, a greater tightening torque on the cap, ensuring better compression of the gasket.

TECHNICAL DATA

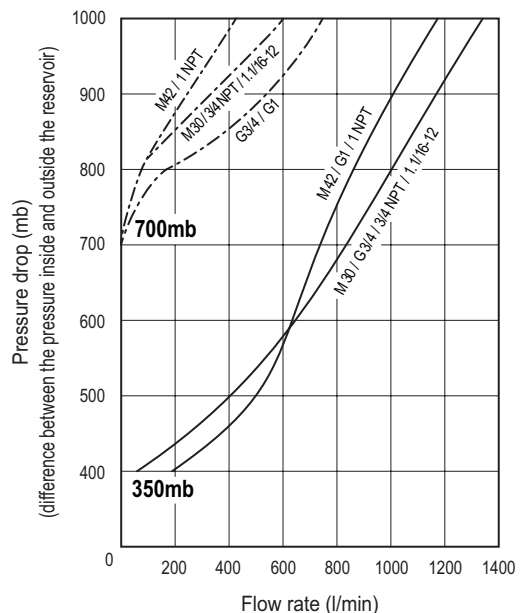
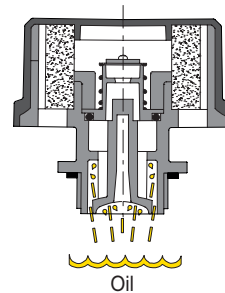
Air flow rate for the different executions of breather caps can be obtained from the diagram on the basis of the difference of air pressure inside and outside the reservoir.

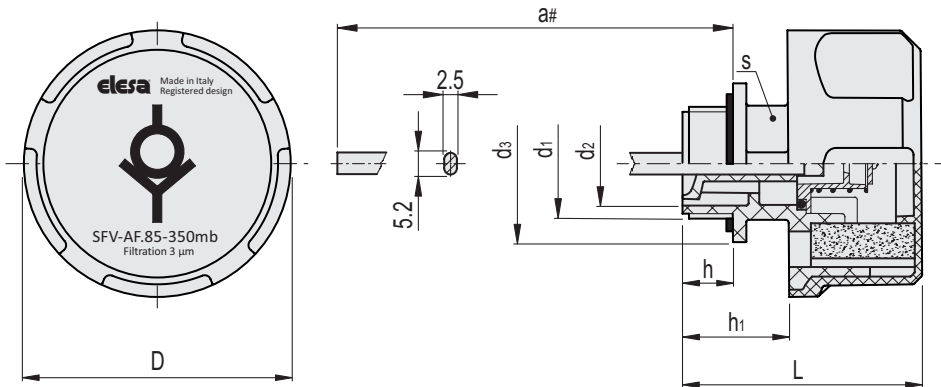
SPECIAL EXECUTIONS ON REQUEST

- Black cover without graphic symbol.
- Orange cover.
- Orange cover without graphic symbol.
- Yellow cover.
- Yellow cover without graphic symbol.
- Dipstick can be supplied in different lengths and/or complete with MAX-MIN level lines.



ELESA Original design





SFV-AF+a-350MB

Code	Description	D	a#	L	d1	d2	d3	h	h1	s	⚖
52930-C9	SFV-AF.85-M30x1.5+FC3-350MB+a-C9	85	193	73	M30x1.5	23	38	16	30.5	28	155
52932-C9	SFV-AF.85-M42x2+FC3-350MB+a-C9	85	190	76	M42x2	33	50	16.5	34	36	164
52934-C9	SFV-AF.85-G3/4+FC3-350MB+a-C9	85	193	73	G 3/4	20.5	35	16	30.5	28	154
52936-C9	SFV-AF.85-G1+FC3-350MB+a-C9	85	193	73	G1	25	40	16	30.5	28	157
952934-C9	SFV-AF.85-3/4 NPT+FC3-350MB+a-C9	85	193	73	3/4 NPT	20.5	36	16.5	30.5	28	154
952936-C9	SFV-AF.85-1 NPT+FC3-350MB+a-C9	85	191	77	1 NPT	27	41	19	34.5	34	157
952938-C9	SFV-AF.85-1.1/16-12 SAE+FC3-350MB+a-C9	85	193	73	1.1/16-12 UNF	20.5	35	16	30.5	28	154

SFV-AF+a-700MB

Code	Description	D	a#	L	d1	d2	d3	h	h1	s	⚖
52931-C9	SFV-AF.85-M30x1.5+FC3-700MB+a-C9	85	193	73	M30x1.5	23	38	16	30.5	28	156
52933-C9	SFV-AF.85-M42x2+FC3-700MB+a-C9	85	190	76	M42x2	33	50	16.5	34	36	165
52935-C9	SFV-AF.85-G3/4+FC3-700MB+a-C9	85	193	73	G 3/4	20.5	35	16	30.5	28	155
52937-C9	SFV-AF.85-G1+FC3-700MB+a-C9	85	193	73	G1	25	40	16	30.5	28	158
952935-C9	SFV-AF.85-3/4 NPT+FC3-700MB+a-C9	85	193	73	3/4 NPT	20.5	36	16.5	30.5	28	155
952937-C9	SFV-AF.85-1 NPT+FC3-700MB+a-C9	85	191	77	1 NPT	27	41	19	34.5	34	158
952939-C9	SFV-AF.85-1.1/16-12 SAE+FC3-700MB+a-C9	85	193	73	1.1/16-12 UNF	20.5	35	16	30.5	28	155

