

Solid lobe knobs

Technopolymer chrome-plated

MATERIAL

Glass-fibre reinforced polyamide based (PA) technopolymer, chrome-plated, glossy finish.

STANDARD EXECUTION

Brass boss, threaded blind hole.

FEATURES AND APPLICATIONS

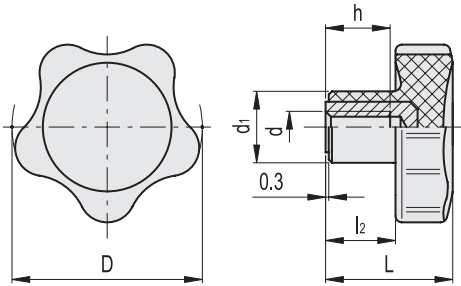
The exclusive five-lobe shape (ELESA original design) offers the operator's fingers a proper grip and prevents unhealthy residues from depositing thanks to its solid shape without cavities.

CHEMICAL AGENTS RESISTANCE

This knob is particularly suitable for applications on machines and equipment whose parts, for hygienic reasons, must be frequently cleaned also using water or steam jets. The chrome-plating makes the surface finish semi-glossy and homogeneous to facilitate cleaning operations. The chrome-plated surface is resistant to wear, scrapes and shocks. In laboratory tests carried out at ambient temperature (23°C), the chrome-plated surface revealed to be resistant to: sea water, detergents, acetone, ethyl alcohol, formic acid, chlorine solutions.



ELESA Original design



Code	Description	D	d6H	L	d1	l2	h	⚖
152702	VC.692/32-CR-B-M6	32	M6	22,5	14	12,5	10	17
152712	VC.692/40-CR-B-M8	40	M8	26	15	14	13	26
152722	VC.692/50-CR-B-M10	50	M10	31	18	17	17	46
152731	VC.692/60-CR-B-M10	60	M10	36,5	21	21	20	71