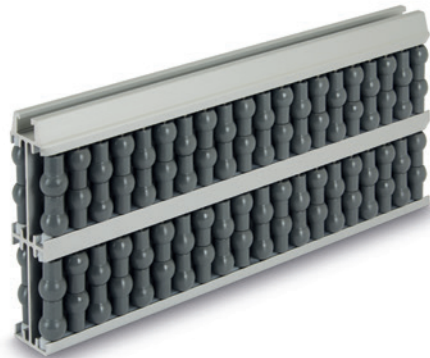




Conveyor components



DESIGNED
FOR ENGINEERING

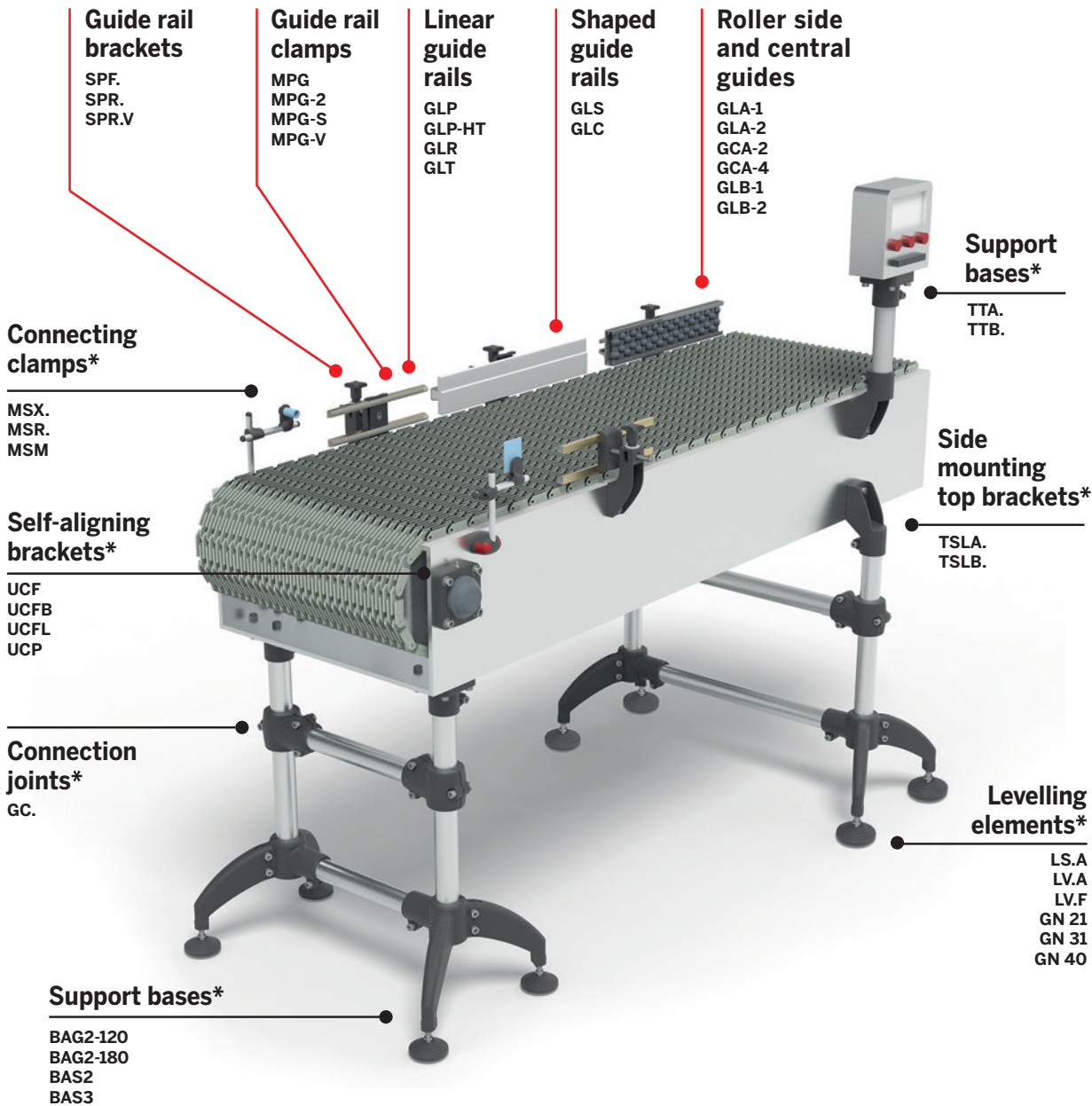
Conveyor components

ELESA+GANTER conveyor components allow the creation of support structures for production lines in diverse industrial sectors, such as bottling, packaging and material handling.

The vast ELESA+GANTER range, already available on our website elesa-ganter.com, is now enlarged with new linear guide rails, roller side guides, roller central guides and a series of accessories.

The side and central roller guides in acetal resin based (POM) technopolymer, are now available in many variants suitable for guiding products of different vertical dimensions. The range includes guides with spherical, cylindrical and round contact rollers for guiding products in cans, cardboard and glass respectively. Pins, screws and nuts in stainless steel guarantee a high resistance to corrosion.

The linear guide rails in polyethylene-based technopolymer (HMWPE) guarantee a high resistance to wear and, due to the low friction coefficient, they are particularly suitable for handling high speeds.



*Browse the full range on elesa-ganter.com

ELESA and GANTER models all rights reserved in accordance with the law.
Always mention the source when reproducing our drawings.

GLA-1**Roller side guides**

Technopolymer,
aluminium, stainless
steel

**GLA-2****Roller side guides**

Technopolymer,
aluminium, stainless
steel

**GCA-2****Roller central guides**

Technopolymer,
aluminium, stainless
steel

**GCA-4****Roller central guides**

Technopolymer,
aluminium, stainless
steel

**TGL****Closing cap for GLA-1 side guides**

Technopolymer

**BDG****Connecting bar for GLA and GCA guides**

Steel

**PGL-1****Separation block for GLA-1 side guides**

Technopolymer

**PGL-2****Separation block for GLA-2 side guides**

Technopolymer

**PGC-2****Separation block for GCA-2 central guides**

Technopolymer

**PGC-4****Separation block for GCA-4 central guides**

Technopolymer

**GLB-1****Articulated side guides**

Technopolymer,
stainless steel

**GLB-2****Articulated side guides**

Technopolymer,
stainless steel

**PRA-GLB****Profile for GLB side guides**

Stainless steel

**PRB-GLB****Profile for GLB side guides**

Stainless steel

**GLP GLP-HT****Linear guide rails**

Flat profile,
technopolymer,
stainless steel

**GLR****Linear guide rail**

Round profile R20,
technopolymer,
stainless steel

**GLS****Linear guide rail**

Shaped profile,
technopolymer,
stainless steel

**GLT****Linear guide rail**

Round profile R7,
technopolymer,
stainless steel

**GLC****Wide guide rails**

Shaped profile,
technopolymer

**MPG-2 MPG-S MPG****Guide rail clamps**

Technopolymer and
stainless steel

**SPF. SPR. SPR.V****Guide rail brackets**

for linear and
angular positioning,
technopolymer



Roller side guides

Technopolymer, aluminium, stainless steel

PROFILE

Anodised aluminium, natural colour, matte finish.

PINS SUPPORT

Acetal resin based (POM) technopolymer, white colour.

PINS

AISI 304 stainless steel.

ROLLERS

Polyethylene based (PE) technopolymer, grey colour.

STANDARD EXECUTIONS

- GLA-1-RS: with shaped rollers, spherical contact.
- GLA-1-RC: with cylindrical rollers.
- GLA-1-RT: with shaped rollers, cylindrical contact.

FEATURES AND APPLICATIONS

GLA-1 side guides are self-supporting structures for the side guide of products with limited vertical dimensions on conveyor belts (Fig.1). Depending on the product to transport, it is recommended to use:

- GLA-1-RS: for the guide of products in cans or in plastic containers;
- GLA-1-RC: for the guide of cardboard products, for a greater fluency;
- GLA-1-RT: for the guide of glass products, in case of accidental breakage they facilitate the expulsion of debris.

Supplied assembled in bars of 1440 or 3000 mm length.

SPECIAL EXECUTIONS ON REQUEST

- Side guides with rollers in different colours.
- Side guides with pins in acetal resin based (POM) technopolymer.

ACCESSORIES ON REQUEST

- BDG: zinc-plated steel connecting bar for guides.
- TGL: closing cap for guides.
- PGL-1: separation block for side guide.
- MPG-P: assembly pin.
- MPG-V: zinc-plated steel hammer head screw.

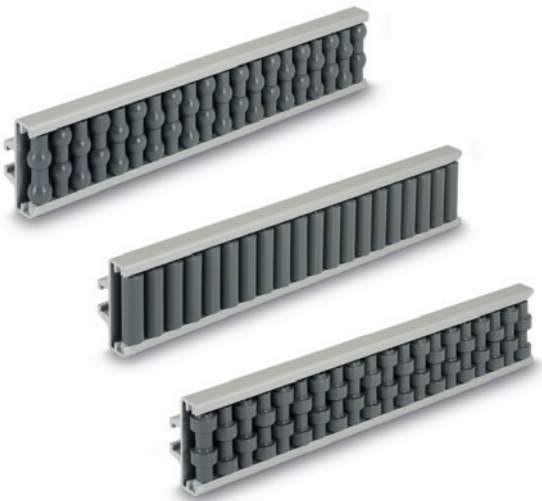
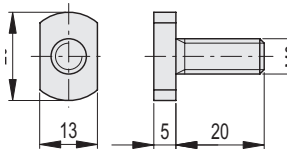
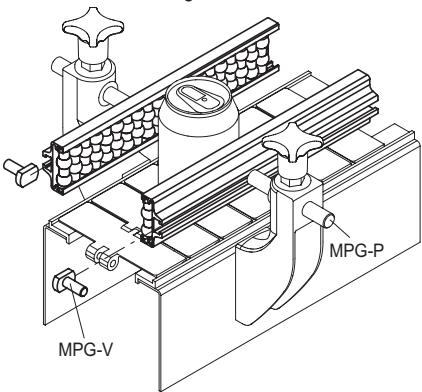


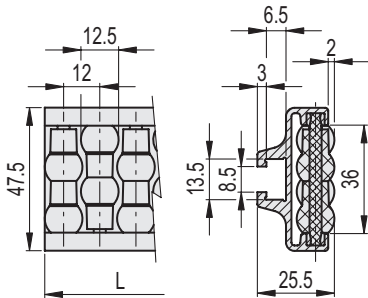
Fig.1



GLA-1-RS

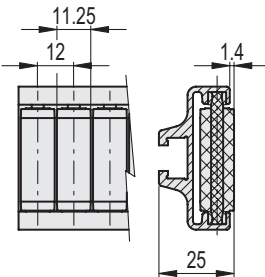
GLA-1-RC

GLA-1-RT



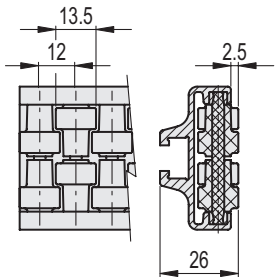
GLA-1-RS

STAINLESS STEEL



GLA-1-RC

STAINLESS STEEL



GLA-1-RT

STAINLESS STEEL

Code	Description	L	Δ
419104	GLA-1-RS-48-1440	1440	1630
419101	GLA-1-RS-48-3000	3000	3400

Code	Description	L	Δ
419105	GLA-1-RC-48-1440	1440	1630
419102	GLA-1-RC-48-3000	3000	3400

Code	Description	L	Δ
419106	GLA-1-RT-48-1440	1440	1630
419133	GLA-1-RT-48-3000	3000	3400

Roller side guides

Technopolymer, aluminium, stainless steel

PROFILE

Anodised aluminium, natural colour, matte finish.

PINS SUPPORT

Acetal resin based (POM) technopolymer, white colour.

PINS

AISI 304 stainless steel.

ROLLERS

Polyethylene based (PE) technopolymer, grey colour.

STANDARD EXECUTIONS

- **GLA-2-RS**: with shaped rollers, spherical contact.
- **GLA-2-RC**: with cylindrical rollers.
- **GLA-2-RT**: with shaped rollers, cylindrical contact.

FEATURES AND APPLICATIONS

GLA-2 side guides are self-supporting structures for the side guide of products with important vertical dimensions on conveyor belts (Fig.1).

Depending on the product to transport, it is recommended to use:

- GLA-2-RS: for the guide of products in cans or in plastic containers;
- GLA-2-RC: for the guide of cardboard products, for a greater fluency;
- GLA-2-RT: for the guide of glass products, in case of accidental breakage they facilitate the expulsion of debris.

Supplied assembled in bars of 1440 or 3000 mm length.

SPECIAL EXECUTIONS ON REQUEST

- Side guides with rollers in different colours.
- Side guides with pins in acetal resin based (POM) technopolymer.

ACCESSORIES ON REQUEST

- BDG: zinc-plated steel connecting bar for guides.
- TGL: closing cap for guides.
- PGL-2: separation block for side guide.
- MPG-P: assembly pin.
- MPG-V: zinc-plated steel hammer head screw (see GLA-1).

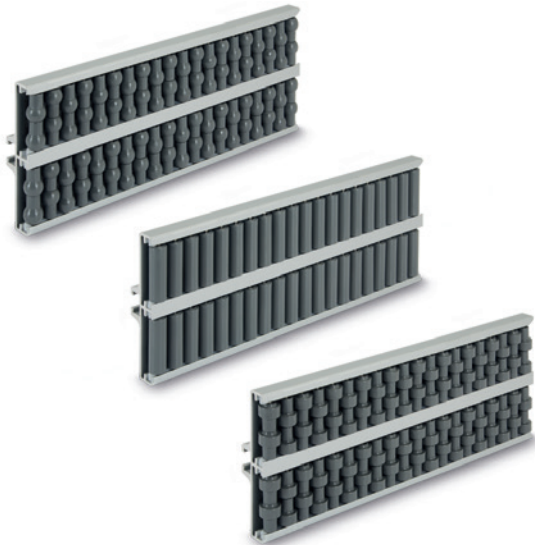
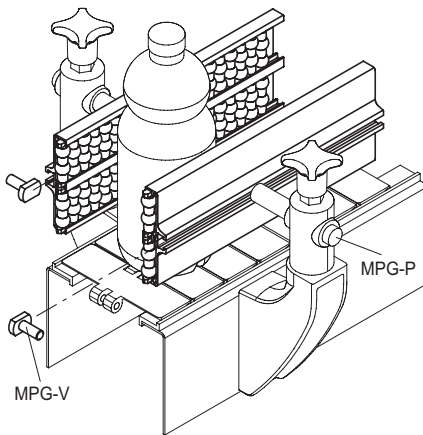


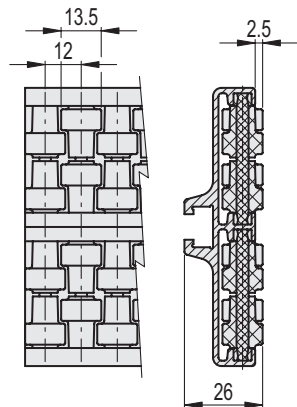
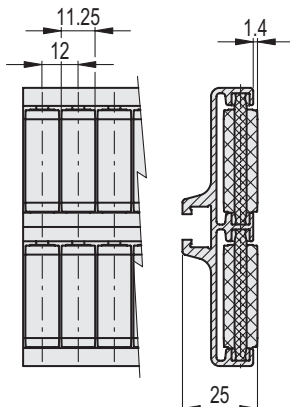
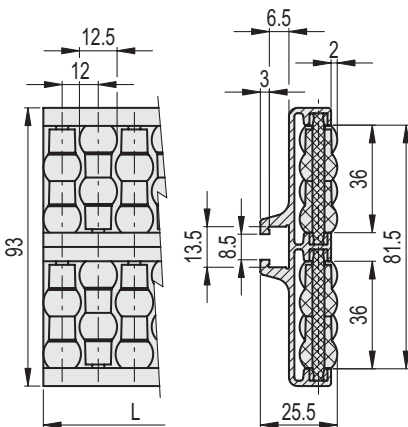
Fig.1



GLA-2-RS

GLA-2-RC

GLA-2-RT



GLA-2-RS

STAINLESS STEEL

GLA-2-RC

STAINLESS STEEL

GLA-2-RT

STAINLESS STEEL

Code	Description	L	△
419115	GLA-2-RS-93-1440	1440	3170
419111	GLA-2-RS-93-3000	3000	6600

Code	Description	L	△
419114	GLA-2-RC-93-1440	1440	3170
419112	GLA-2-RC-93-3000	3000	6600

Code	Description	L	△
419116	GLA-2-RT-93-1440	1440	3170
419113	GLA-2-RT-93-3000	3000	6600

Roller central guides

Technopolymer, aluminium, stainless steel

PROFILE

Anodised aluminium, natural colour, matte finish.

PINS SUPPORT

Acetal resin based (POM) technopolymer, white colour.

PINS

AISI 304 stainless steel.

ROLLERS

Polyethylene based (PE) technopolymer, grey colour.

STANDARD EXECUTIONS

- GCA-2-RS: with shaped rollers, spherical contact.
- GCA-2-RC: with cylindrical rollers.
- GCA-2-RT: with shaped rollers, cylindrical contact.

FEATURES AND APPLICATIONS

GCA-2 central guides are self-supporting structures for the side guide of products with limited vertical dimensions on conveyor belts (Fig.1).

Depending on the product to transport, it is recommended to use:

- GCA-2-RS: for the guide of products in cans or in plastic containers;
- GCA-2-RC: for the guide of cardboard products, for a greater fluency;
- GCA-2-RT: for the guide of glass products, in case of accidental breakage they facilitate the expulsion of debris.

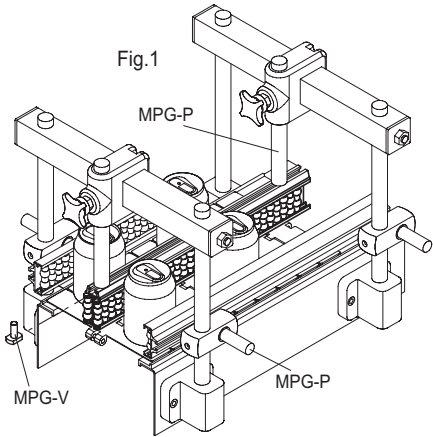
Supplied assembled in bars of 1440 or 3000 mm length.

SPECIAL EXECUTIONS ON REQUEST

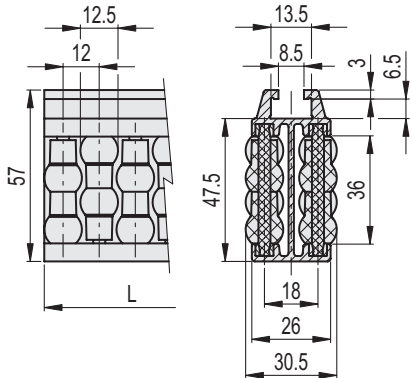
- Central guides with rollers in different colours.
- Central guides with pins in acetal resin based (POM) technopolymer.

ACCESSORIES ON REQUEST

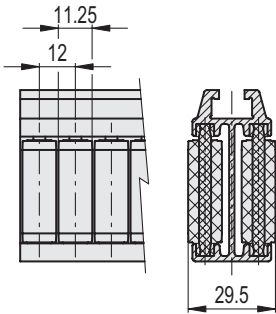
- BDG: zinc-plated steel connecting bar for guides.
- TGL: closing cap for guides.
- PGC-2: separation block for central guide.
- MPG-P: assembly pin.
- MPG-V: zinc-plated steel hammer head screw (see GLA-1).



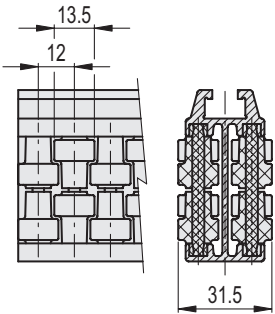
GCA-2-RS



GCA-2-RC



GCA-2-RT



GCA-2-RS		STAINLESS STEEL	
Code	Description	L	⚖
419125	GCA-2-RS-57-1440	1440	3170
419121	GCA-2-RS-57-3000	3000	6600

GCA-2-RC		STAINLESS STEEL	
Code	Description	L	⚖
419126	GCA-2-RC-57-1440	1440	3170
419122	GCA-2-RC-57-3000	3000	6600

GCA-2-RT		STAINLESS STEEL	
Code	Description	L	⚖
419124	GCA-2-RT-57-1440	1440	3170
419123	GCA-2-RT-57-3000	3000	6600

Roller central guides

Technopolymer, aluminium, stainless steel

PROFILE

Anodised aluminium, natural colour, matte finish.

PINS SUPPORT

Acetal resin based (POM) technopolymer, white colour.

PINS

AISI 304 stainless steel.

ROLLERS

Polyethylene based (PE) technopolymer, grey colour.

STANDARD EXECUTIONS

- GCA-4-RS: with shaped rollers, spherical contact.
- GCA-4-RC: with cylindrical rollers.
- GCA-4-RT: with shaped rollers, cylindrical contact.

FEATURES AND APPLICATIONS

GCA-4 central guides are self-supporting structures for the side guide of products with important vertical dimensions on conveyor belts (Fig.1).

Depending on the product to transport, it is recommended to use:

- GCA-4-RS: for the guide of products in cans or in plastic containers;
- GCA-4-RC: for the guide of cardboard products, for a greater fluency;
- GCA-4-RT: for the guide of glass products, in case of accidental breakage they facilitate the expulsion of debris.

Supplied assembled in bars of 1440 or 3000 mm length.

SPECIAL EXECUTIONS ON REQUEST

- Central guides with rollers in different colours.
- Central guides with pins in acetal resin based (POM) technopolymer.

ACCESSORIES ON REQUEST

- BDG: zinc-plated steel connecting bar for guides.
- TGL: closing cap for guides.
- PGC-4: separation block for central guide.
- MPG-P: assembly pin.
- MPG-V: zinc-plated steel hammer head screw (see GLA-1).

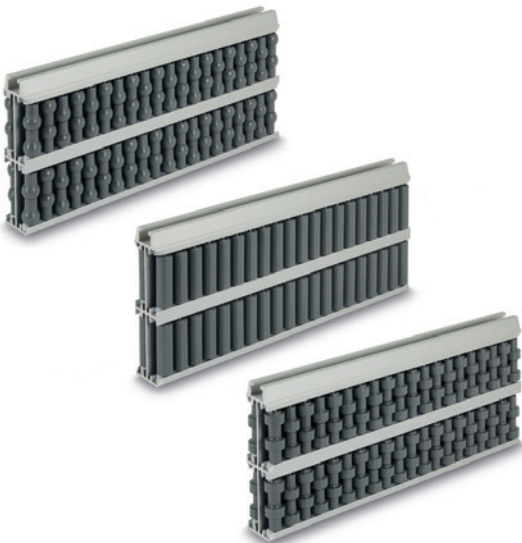
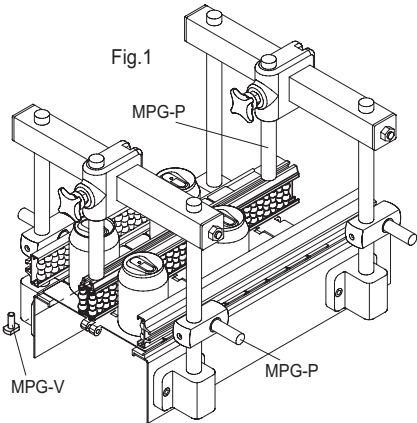
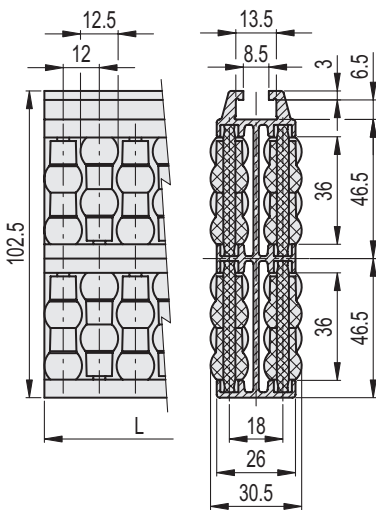


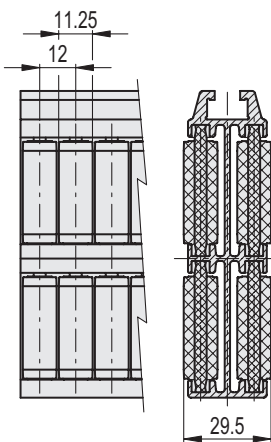
Fig.1



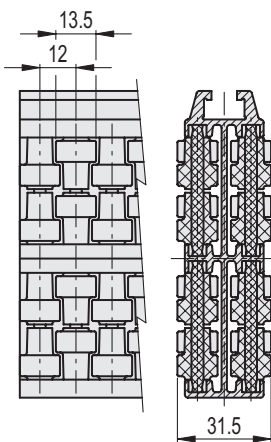
GCA-4-RS



GCA-4-RC



GCA-4-RT



GCA-4-RS STAINLESS STEEL

Code	Description	L	⚖
419134	GCA-4-RS-103-1440	1440	6260
419131	GCA-4-RS-103-3000	3000	13040

GCA-4-RC STAINLESS STEEL

Code	Description	L	⚖
419135	GCA-4-RC-103-1440	1440	6260
419132	GCA-4-RC-103-3000	3000	13040

GCA-4-RT STAINLESS STEEL

Code	Description	L	⚖
419136	GCA-4-RT-103-1440	1440	6260
419133	GCA-4-RT-103-3000	3000	13040

Closing cap for GLA and GCA guides

MATERIAL

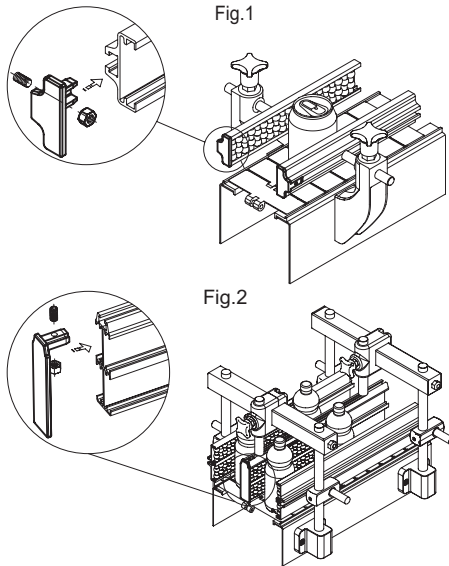
Polyamide-based (PA) technopolymer, grey colour.

SCREW AND NUT

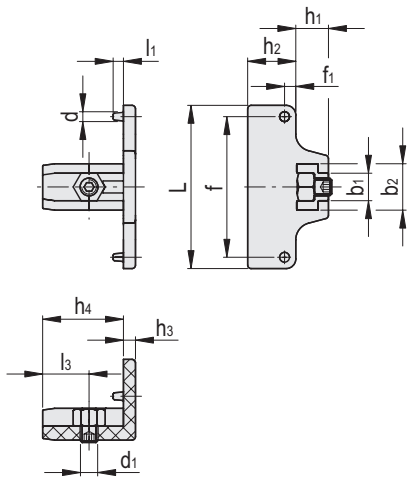
AISI 304 stainless steel.

FEATURES AND APPLICATIONS

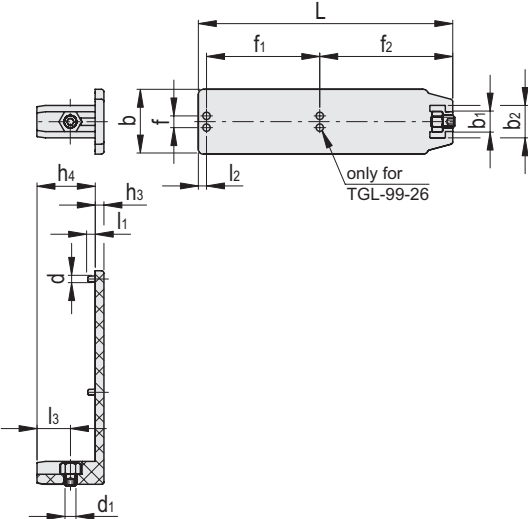
TGL closing cap is used at the ends of GLA side guides (Fig.1) and GCA central guides (Fig.2).



TGL-24-48
TGL-24-93



TGL-57-26
TGL-99-26



STAINLESS STEEL

Code	Description	d	d1	f1	L	f	f2	b	b1	b2	h1	h2	h3	h4	l1	l2	l3	⚖
419143	TGL-24-48	2.5	M5	3.2	47.5	40.9	-	-	8	13.5	9.5	14	3.5	23.5	3	-	13.5	10
419144	TGL-24-93	2.5	M5	3.2	93	86	-	-	8	13	9.5	14	3.5	23.5	3	-	13.5	16
419142	TGL-57-26	2.5	M5	-	57.4	4.7	-	26.2	8	13	-	-	3.5	23.5	3	3.3	13.5	11
419140	TGL-99-26	2.5	M5	45.7	102.7	4.7	53.7	26.2	8	13	-	-	3.5	23.5	3	3.3	13.5	17

Connecting bar for GLA and GCA guides

Steel

MATERIAL

Zinc-plated steel.

SCREWS

Zinc-plated steel.

FEATURES AND APPLICATIONS

BDG connecting bar is used for connecting the profiles (Fig.1) of the different side guides (GLA) or central guides (GCA). It is supplied with 4 assembly grub screws M8x10 with hexagon socket.

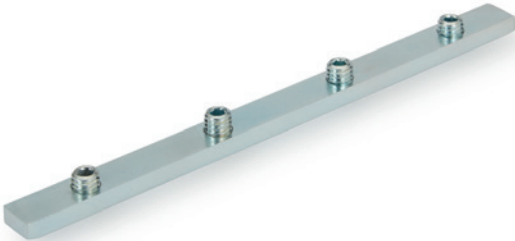
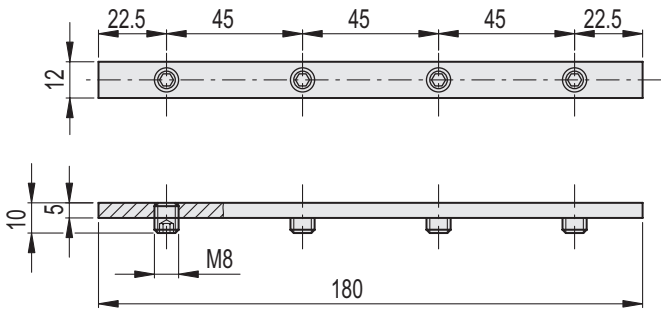
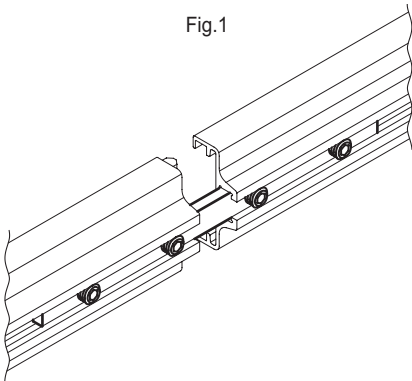


Fig.1



Code	Description	⚖
419141	BDG-12-180	80

Separation block for GLA-1
side guides

Technopolymer

MATERIAL

Polyethylene based (PE) technopolymer, grey colour.

SCREWS AND NUTS WITH THREAD LOCK

AISI 304 stainless steel.

FEATURES AND APPLICATIONS

PGL-1 separation block is used at the ends of GLA-1 side guides (Fig.1).

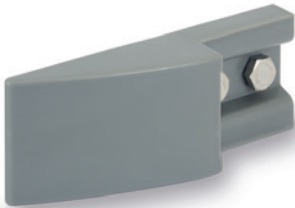
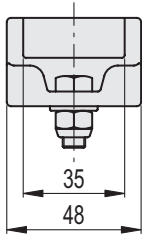
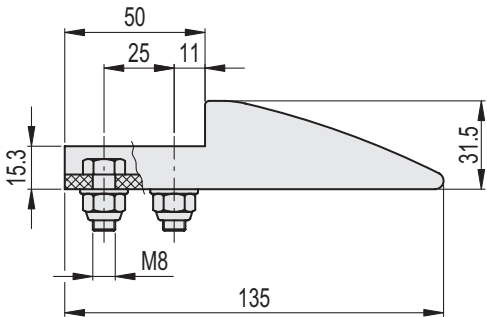
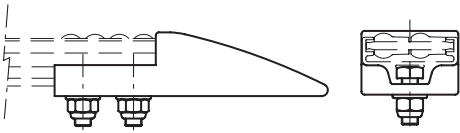
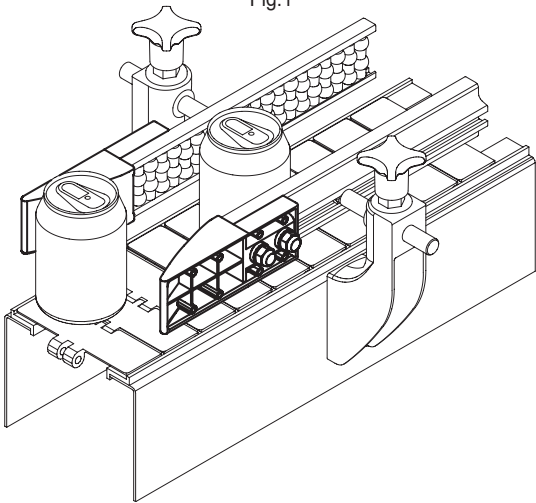


Fig.1



STAINLESS STEEL

Code	Description	
419145	PGL-1-48-135	80

Separation block for GLA-2
side guides

Technopolymer

MATERIAL

Polyethylene based (PE) technopolymer, grey colour.

SCREWS AND NUTS WITH THREAD LOCK

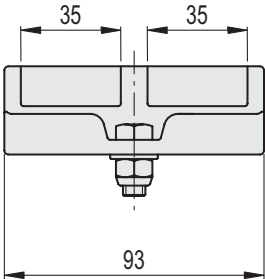
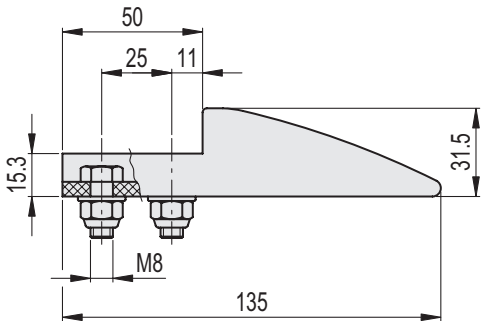
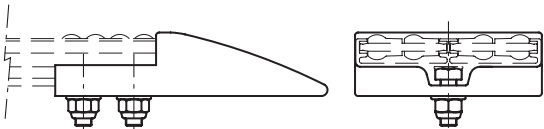
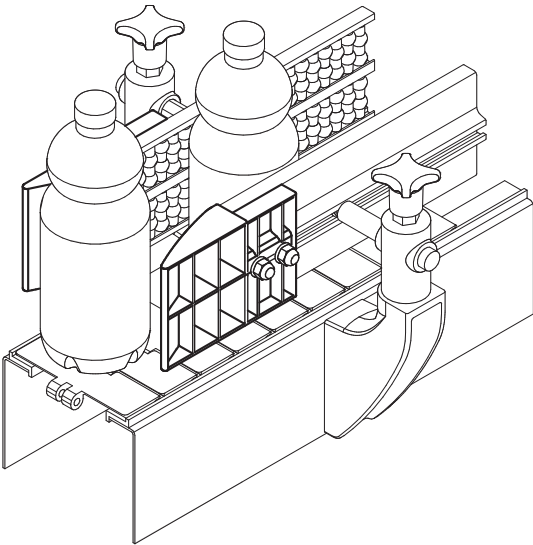
AISI 304 stainless steel.

FEATURES AND APPLICATIONS

PGL-2 separation block is used at the ends of GLA-2 side guides (Fig.1).



Fig.1



STAINLESS STEEL

Code	Description	⚖
419149	PGL-2-93-135	120

Separation block for GCA-2 central guides

Technopolymer

MATERIAL

Polyethylene based (PE) technopolymer, grey colour.

SCREWS AND NUTS WITH THREAD LOCK

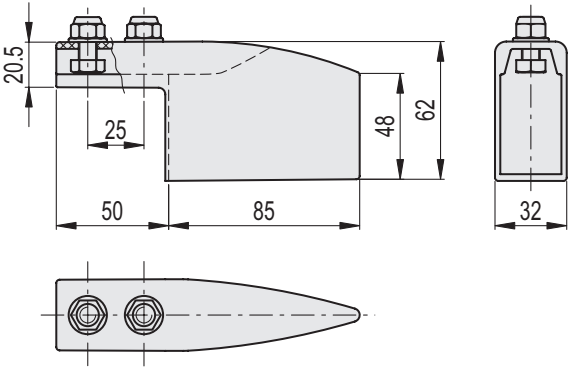
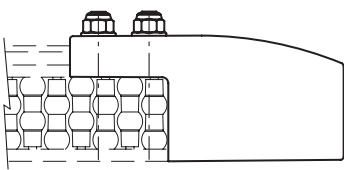
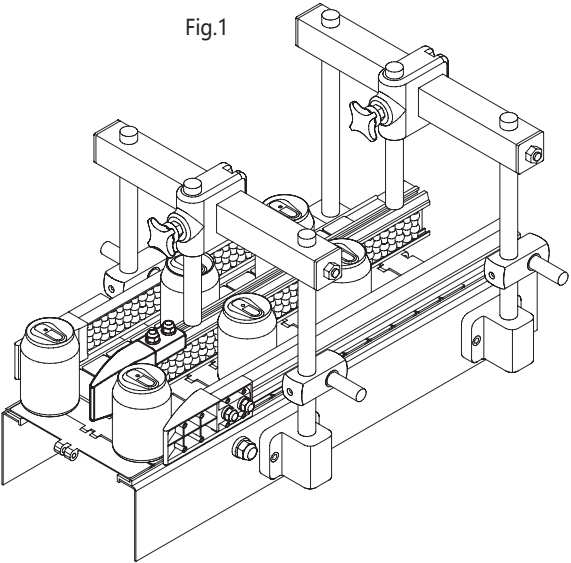
AISI 304 stainless steel.

FEATURES AND APPLICATIONS

PGC-2 separation block is used at the ends of GCA-2 central guides (Fig.1).



Fig.1



STAINLESS STEEL

Code	Description	
419147	PGC-2-62-135	90

Separation block for GCA-4
central guides

Technopolymer

MATERIAL

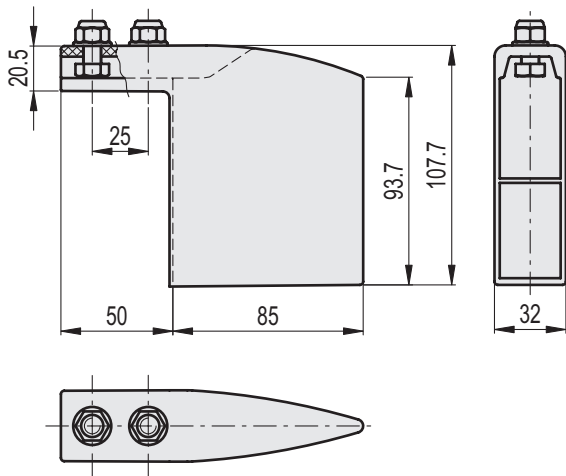
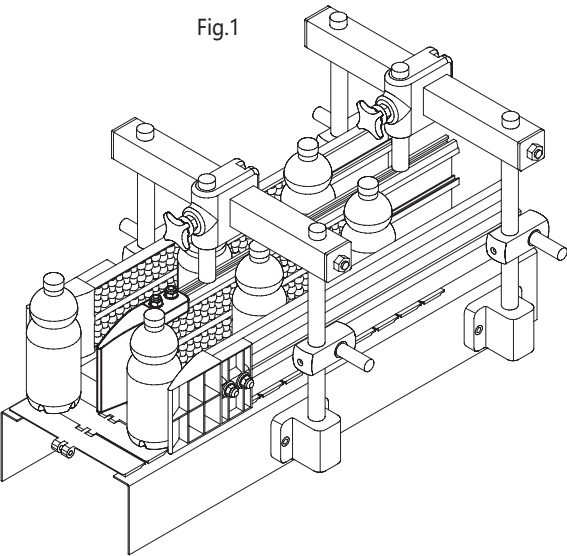
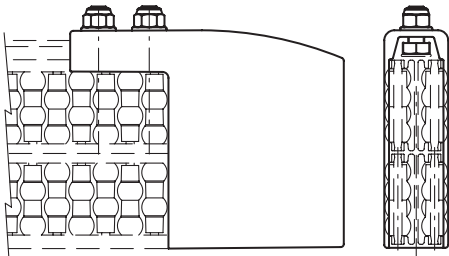
Polyethylene based (PE) technopolymer, grey colour.

SCREWS AND NUTS WITH THREAD LOCK

AISI 304 stainless steel.

FEATURES AND APPLICATIONS

PGC-4 separation block is used at the ends of GCA-4 central guides (Fig.1).



STAINLESS STEEL

Code	Description	
419151	PGC-4-108-135	130

Articulated side guides

Technopolymer, stainless steel

SELF-SUPPORTING STRUCTURE

Acetal resin based (POM) technopolymer, black colour.

PINS

AISI 304 stainless steel.

ROLLERS

Polyethylene based (PE) technopolymer, grey colour.

STANDARD EXECUTIONS

- **GLB-1-RS**: with shaped rollers, spherical contact.
- **GLB-1-RC**: with cylindrical rollers.
- **GLB-1-RT**: with shaped rollers, cylindrical contact.

FEATURES AND APPLICATIONS

GLB-1 side guides are modular self-supporting structures for the side guide of products with limited vertical dimensions on conveyor belts (Fig.1).

Particularly suitable for use in wet environments.

Depending on the product to transport, it is recommended to use:

- GLB-1-RS: for the guide of products in cans or in plastic containers;
- GLB-1-RC: for the guide of cardboard products, for a greater fluency;
- GLB-1-RT: for the guide of glass products, in case of accidental breakage they facilitate the expulsion of debris.

The joint in the roller side guides allows an external curvature radius 500 mm, internal curvature radius 350 mm.

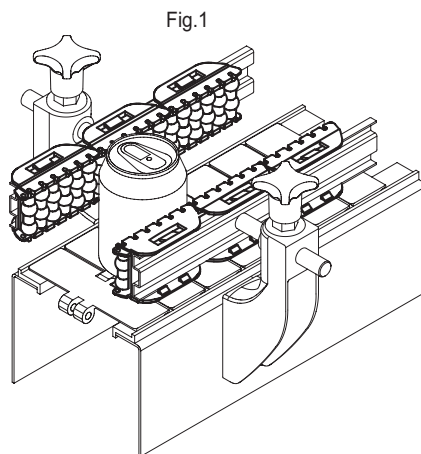
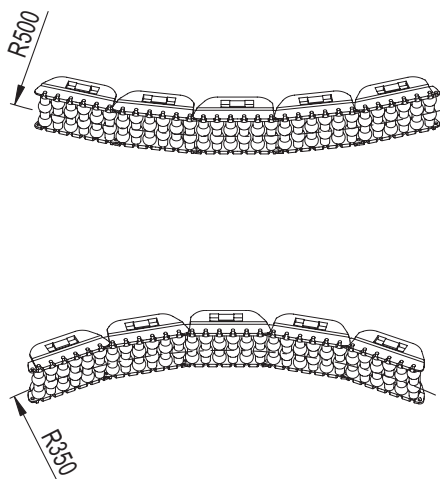
Supplied already assembled in modules of 375 mm length, for profiles 40x8 mm.

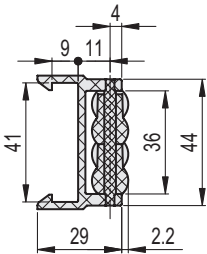
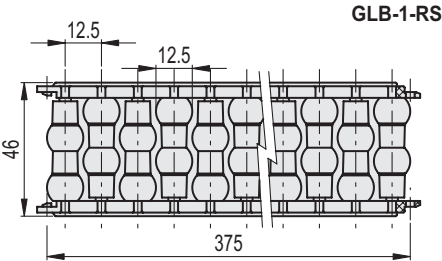
SPECIAL EXECUTIONS ON REQUEST

- Side guides with self-supporting structure and rollers in different colours.
- Side guides with pins in acetal resin based (POM) technopolymer.

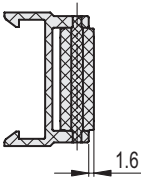
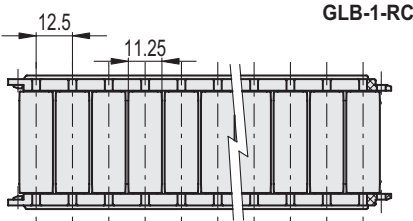
ACCESSORIES ON REQUEST

- PRA-GLB: AISI 304 stainless steel profile for side guides.
- PRB-GLB: AISI 304 stainless steel profile for side guides.

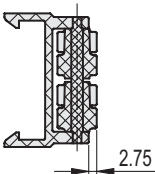
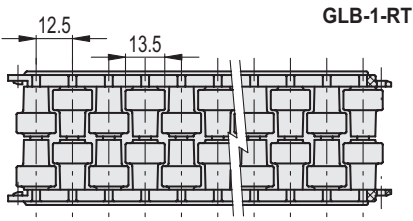




GLB-1-RS		STAINLESS STEEL
Code	Description	
419161	GLB-1-RS-46-375	340



GLB-1-RC		STAINLESS STEEL
Code	Description	
419162	GLB-1-RC-46-375	340



GLB-1-RT		STAINLESS STEEL
Code	Description	
419163	GLB-1-RT-46-375	340

Articulated side guides

Technopolymer, stainless steel

SELF-SUPPORTING STRUCTURE

Acetal resin based (POM) technopolymer, black colour.

PINS

AISI 304 stainless steel.

ROLLERS

Polyethylene based (PE) technopolymer, grey colour.

STANDARD EXECUTIONS

- **GLB-2-RS**: with shaped rollers, spherical contact.
- **GLB-2-RC**: with cylindrical rollers.
- **GLB-2-RT**: with shaped rollers, cylindrical contact.

FEATURES AND APPLICATIONS

GLB-2 side guides are modular self-supporting structures for the side guide of products with important vertical dimensions on conveyor belts (Fig.1).

Particularly suitable for use in wet environments.

Depending on the product to transport, it is recommended to use:

- GLB-2-RS: for the guide of products in cans or in plastic containers;
- GLB-2-RC: for the guide of cardboard products, for a greater fluency;
- GLB-2-RT: for the guide of glass products, in case of accidental breakage they facilitate the expulsion of debris.

The joint in the roller side guides allows an external curvature radius 500 mm, internal curvature radius 350 mm.

Supplied already assembled in modules of 375 mm length, for profiles 40x8 mm.

SPECIAL EXECUTIONS ON REQUEST

- Side guides with self-supporting structure and rollers in different colours.
- Side guides with pins in acetal resin based (POM) technopolymer.

ACCESSORIES ON REQUEST

- PRA-GLB: AISI 304 stainless steel profile for side guides.
- PRB-GLB: AISI 304 stainless steel profile for side guides.

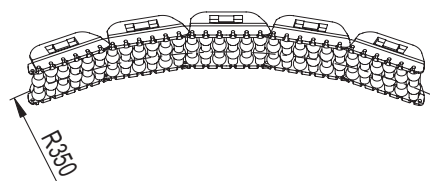
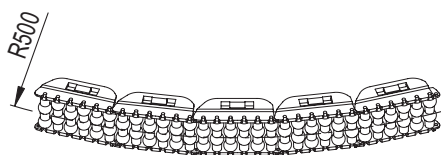
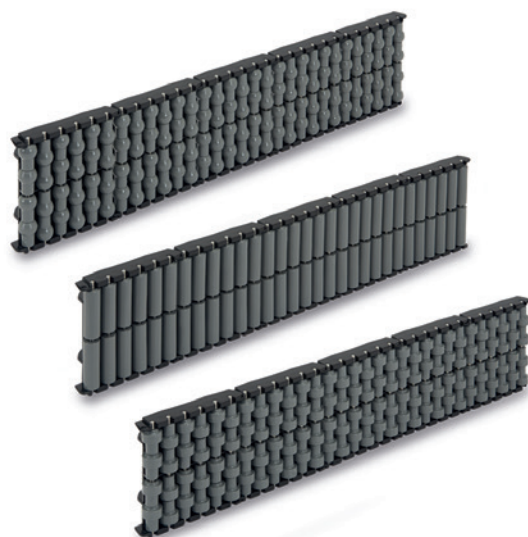
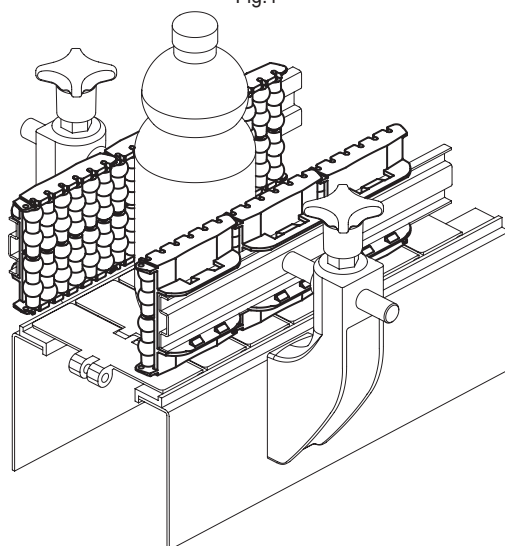
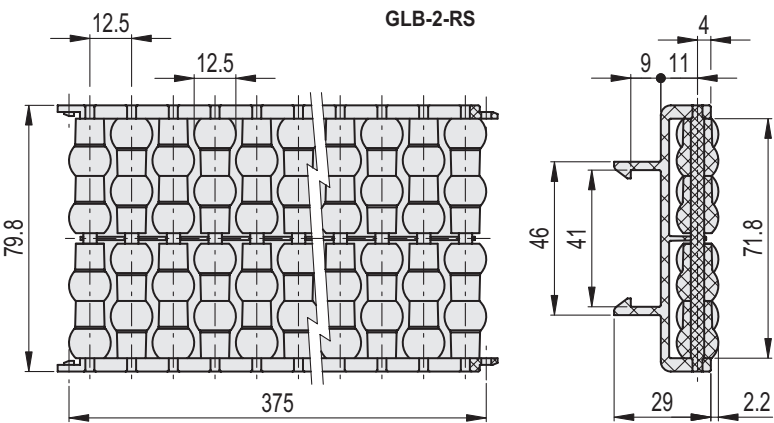
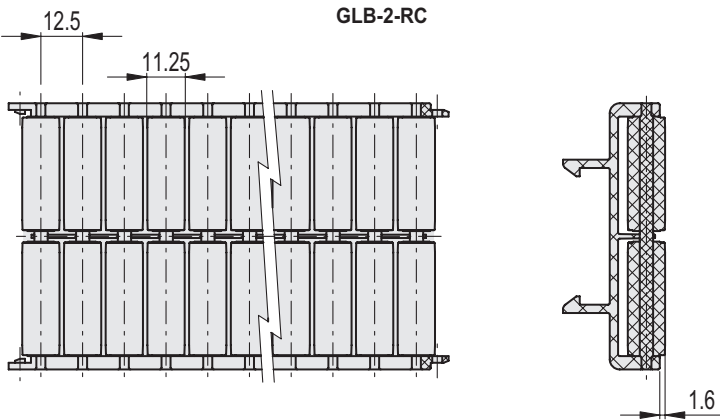


Fig.1

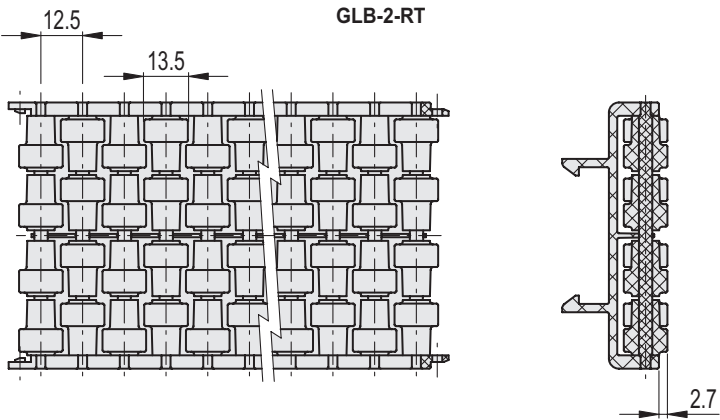




GLB-2-RS		STAINLESS STEEL
Code	Description	⚖
419171	GLB-2-RS-80-375	690



GLB-2-RC		STAINLESS STEEL
Code	Description	⚖
419172	GLB-2-RC-80-375	690



GLB-2-RT		STAINLESS STEEL
Code	Description	⚖
419173	GLB-2-RT-80-375	690

Profile for side guides

for GLB, stainless steel

MATERIAL

AISI 304 stainless steel.

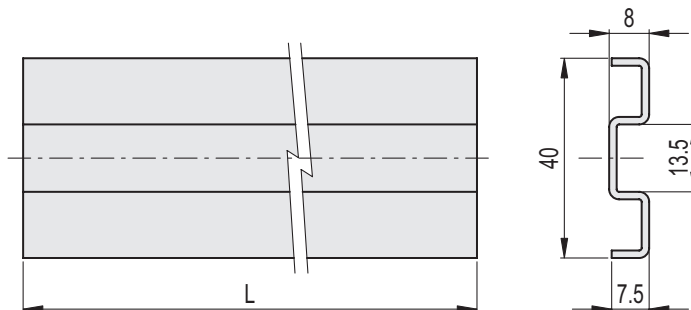
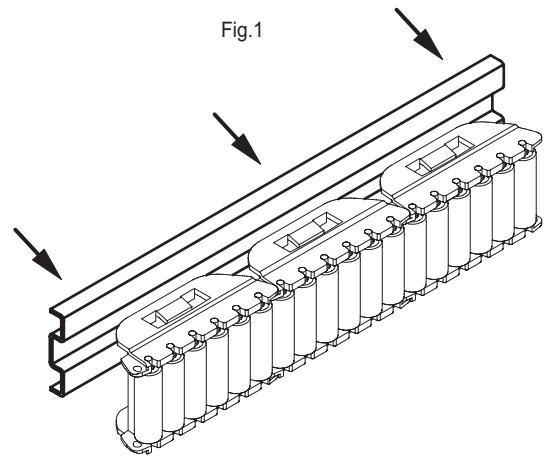
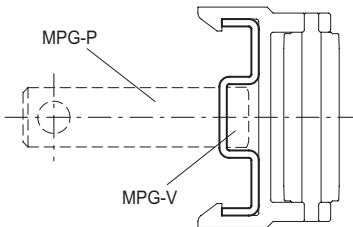
FEATURES AND APPLICATIONS

PRA-GLB profile is used for GLB-1 and GLB-2 side guides assembly (Fig.1).

Supplied in bars not drilled of 1500 or 3000 mm length, to allow the drilling during the assembly.

ACCESSORIES ON REQUEST

- MPG-P: assembly pin.
- MPG-V: zinc-plated steel hammer head screw (see GLA-1).



STAINLESS STEEL

Code	Description	L	ΔΔ
419184	PRA-GLB-40-1500	1500	1008
419181	PRA-GLB-40-3000	3000	2020

Profile for side guides

for GLB, stainless steel

MATERIAL

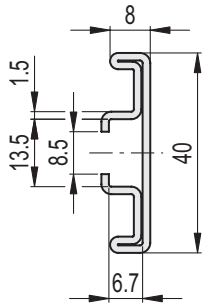
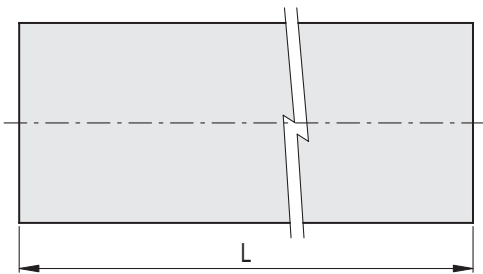
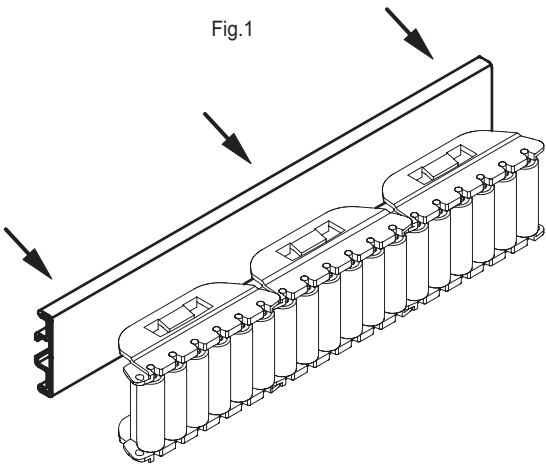
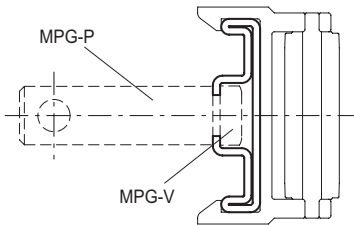
AISI 304 stainless steel.

FEATURES AND APPLICATIONS

PRB-GLB profile is used for the assembly of GLB-1 and GLB-2 side guides (Fig.1).
Supplied in bars of 1500 or 3000 mm length.

ACCESSORIES ON REQUEST

- MPG-P: assembly pin.
- MPG-V: zinc-plated steel hammer head screw (see GLA-1).



STAINLESS STEEL

Code	Description	L	⚖
419186	PRB-GLB-40-1500	1500	1820
419183	PRB-GLB-40-3000	3000	3640

Linear guide rails

Flat profile, technopolymer, stainless steel

GUIDE PROFILE

Polyethylene based (HMWPE) technopolymer, natural colour.

BRACKET

AISI 304 stainless steel.

STANDARD EXECUTIONS

- GLP-12: contact surface width of about 12 mm.
- GLP-32: contact surface width of about 32 mm.

FEATURES AND APPLICATIONS

GLP side guides are used for the side guide of products with different dimensions on conveyor belts (Fig.1), without leaving traces on the containers.

High molecular weight polyethylene (HMWPE) has a high wear resistance; it is particularly suitable for high-speed movements due to its low coefficient of friction.

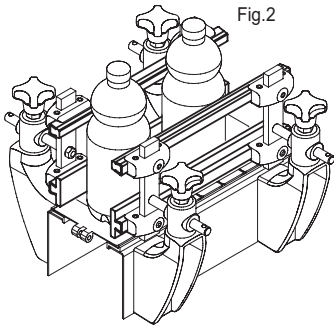
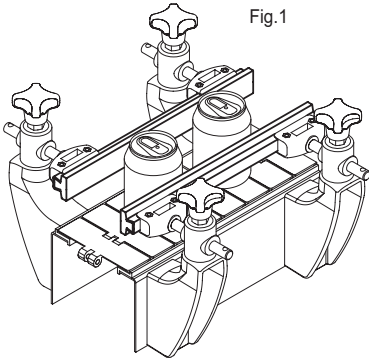
Depending on the product to transport, it is recommended to use:

- GLP-12: for the guide of products with limited dimensions or for GLP-32 support (Fig.2);
- GLP-32: for the guide of products with important vertical dimensions.

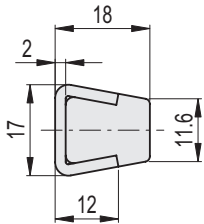
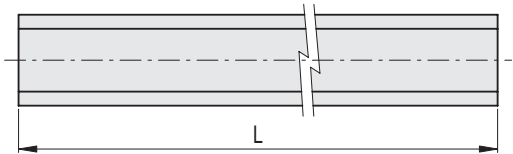
Supplied in bars of 1500 or 3000 mm length.

ACCESSORIES ON REQUEST

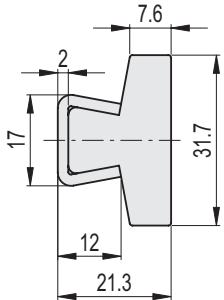
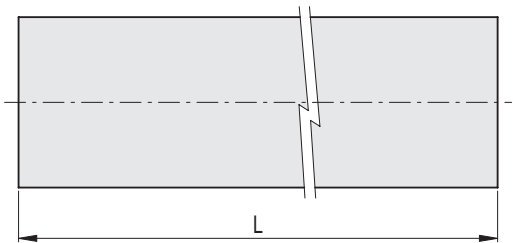
Guide rail clamps MPG-T-S, MPG-2T, MPG-T.



GLP-12



GLP-32



GLP-12

STAINLESS STEEL

Code	Description	L	ΔΔ
419204	GLP-12-1500	1500	1038
419201	GLP-12-3000	3000	2070

GLP-32

STAINLESS STEEL

Code	Description	L	ΔΔ
419205	GLP-32-1500	1500	1320
419202	GLP-32-3000	3000	2640

Linear guide rail, high temperature

Flat profile, technopolymer, stainless steel

GUIDE PROFILE

Polytetrafluoroethylene based (PTFE) technopolymer, natural colour.

BRACKET

AISI 304 stainless steel.

FEATURES AND APPLICATIONS

GLP-HP side guide is used for the side guide of products with different dimensions on conveyor belts (Fig.1), in environments with high temperature, such as ovens, fryers, steam chambers. It can also be used as a support for metal meshes inside ovens (Fig. 2)

ACCESSORIES ON REQUEST

Guide rail clamps MPG-T-S, MPG-2T, MPG-T.



Fig.1

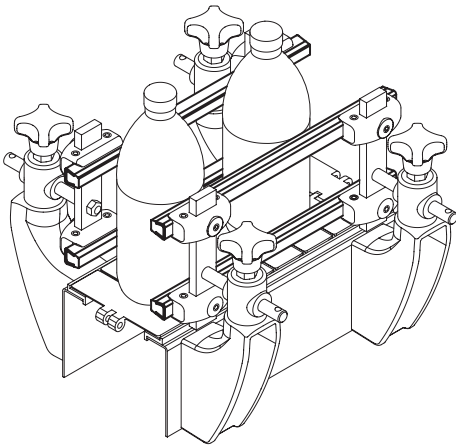
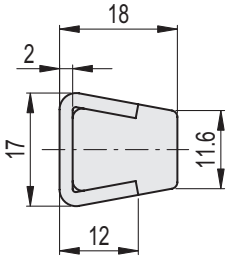
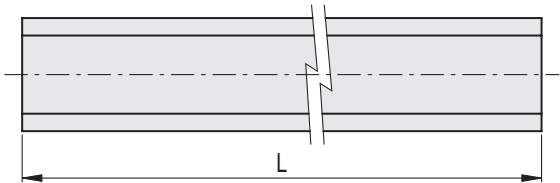
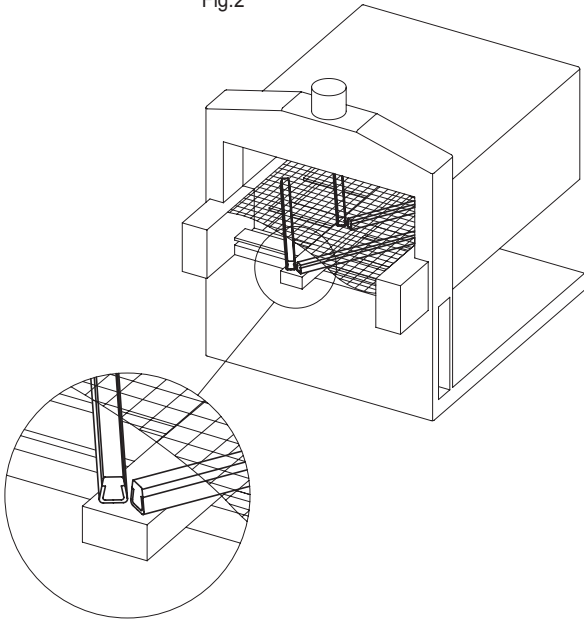


Fig.2



STAINLESS STEEL

Code	Description	L	⚖️
419206	GLP-HT-12-1500	1500	1470
419207	GLP-HT-12-3000	3000	2880

Linear guide rail

Round profile R20, technopolymer, stainless steel

GUIDE PROFILE

Polyethylene based (HMWPE) technopolymer, natural colour.

BRACKET

AISI 304 stainless steel.

FEATURES AND APPLICATIONS

GLR side guide is used to guide very unstable products on conveyor belts, such as bottles (Fig.1) or cans (Fig.2), avoiding rotation, without leaving traces on the containers.

High molecular weight polyethylene (HMWPE) has a high wear resistance; it is particularly suitable for high-speed movements due to its low coefficient of friction.

It can be used with GLP-12 side guide.

Supplied in bars of 1500 or 3000 mm length.

ACCESSORIES ON REQUEST

Guide rail clamps MPG-T-S, MPG-2T, MPG-T.



Fig.1

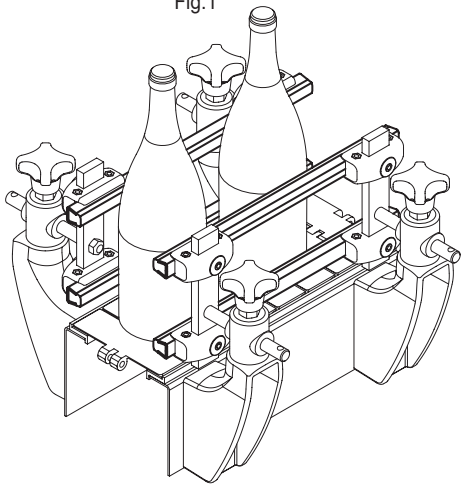
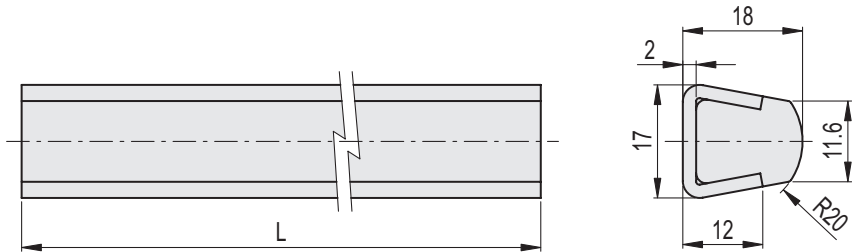
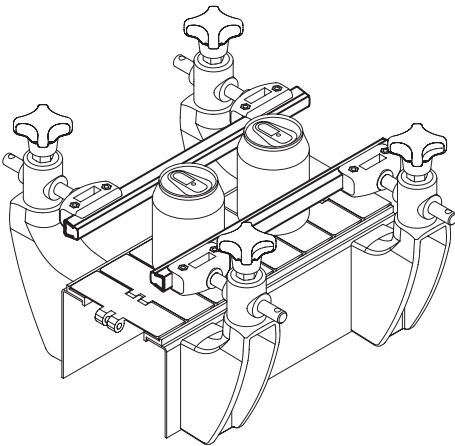


Fig.2



STAINLESS STEEL

Code	Description	L	⚙
419217	GLR-12-3000	3000	2070
419216	GLR-12-1500	1500	1038

Linear guide rail

Shaped profile, technopolymer, stainless steel

GUIDE PROFILE

Polyethylene based (HMWPE) technopolymer, natural colour.

BRACKET

AISI 304 stainless steel.

FEATURES AND APPLICATIONS

GLS side guide with shaped profile is used for the side guide of products with different dimensions on conveyor belts (Fig.1), without leaving traces on the containers.

High molecular weight polyethylene (HMWPE) has a high wear resistance; it is particularly suitable for high-speed movements due to its low coefficient of friction.

They are generally used with GLT or GLP-12 side guides (Fig.2) in case of products with important vertical dimensions.

Supplied in bars of 1500 or 3000 mm length.

ACCESSORIES ON REQUEST

Guide rail clamps MPG-T-S, MPG-2T, MPG-T.



Fig.1

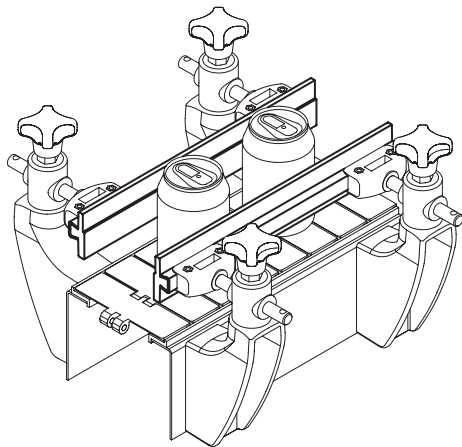
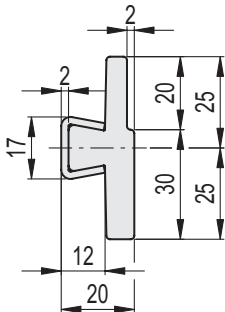
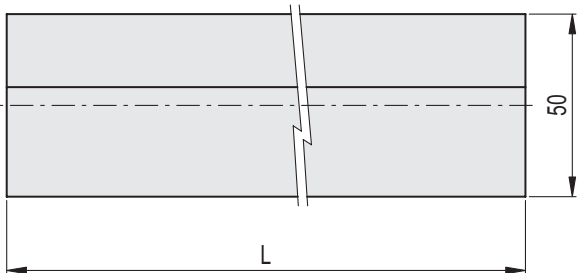
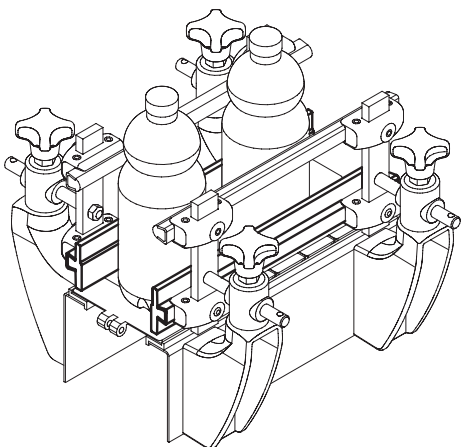


Fig.2



STAINLESS STEEL

Code	Description	L	⚖️
419211	GLS-50-30-1500	1500	1553
419212	GLS-50-30-3000	3000	2070

Linear guide rail

Round profile R7, technopolymer, stainless steel

GUIDE PROFILE

Polyethylene based (HMWPE) technopolymer, natural colour.

BRACKET

AISI 304 stainless steel.

FEATURES AND APPLICATIONS

GLT side guide for the side guide of products with a good stability on conveyor belts (Fig.1), without leaving traces on the containers. High molecular weight polyethylene (HMWPE) has a high wear resistance; it is particularly suitable for high-speed movements due to its low coefficient of friction. Supplied in bars of 1500 or 3000 mm length.

SPECIAL EXECUTIONS ON REQUEST

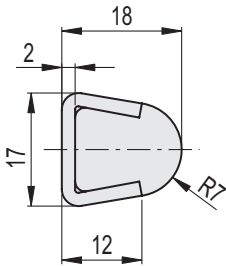
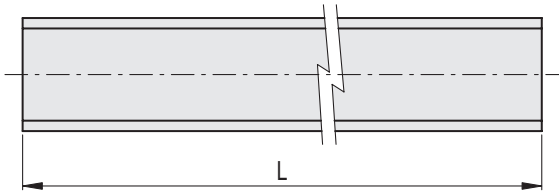
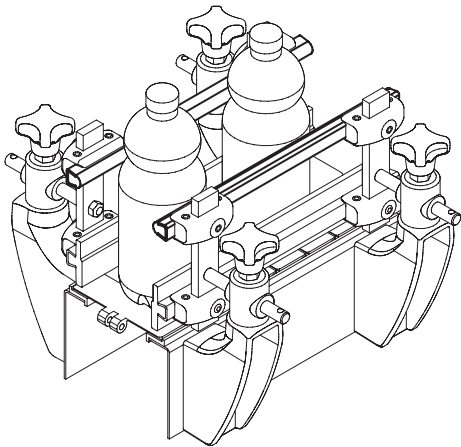
Side guides in blue colour RAL 5005.

ACCESSORIES ON REQUEST

Guide rail clamps MPG-T, MPG-2T, MPG-T-S.



Fig.1



STAINLESS STEEL

Code	Description	L	⚙️
419197	GLT-14R7-3000	3000	2070
419196	GLT-14R7-1500	1500	1038

Wide guide rails

Shaped profile, technopolymer

MATERIAL

Polyethylene based (HMWPE) technopolymer, black colour.

STANDARD EXECUTIONS

- GLC-20: with ledge 20 mm.
- GLC-40: with ledge 40 mm.

FEATURES AND APPLICATIONS

GLC guide rails are used for the side guide of products with different vertical dimensions on conveyor belts.

High molecular weight polyethylene (HMWPE) has a high wear resistance; it is particularly suitable for high-speed movements due to its low coefficient of friction.

Depending on the product to transport, it is recommended to use:

- GLC-20: for the guide of products with limited vertical dimensions (Fig.1);
- GLC-40: for the guide of products with important vertical dimensions (Fig.2);

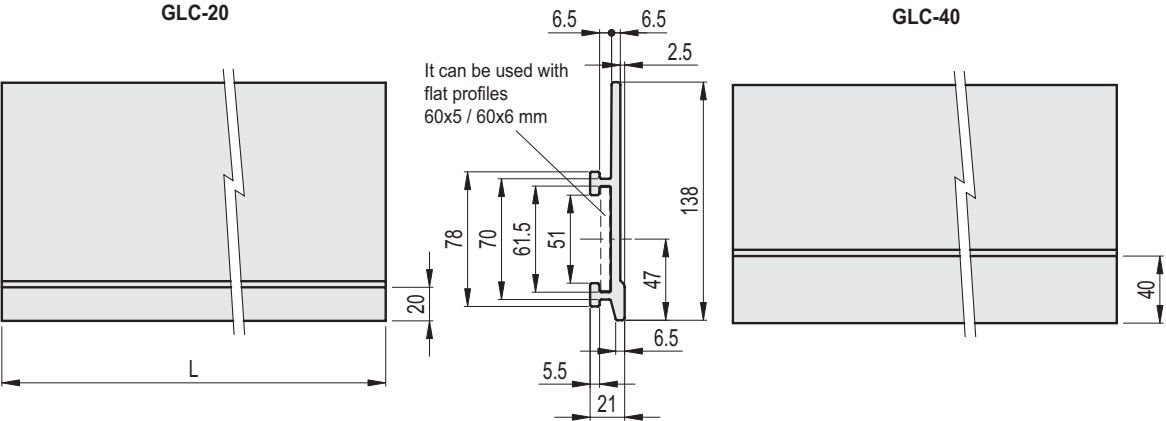
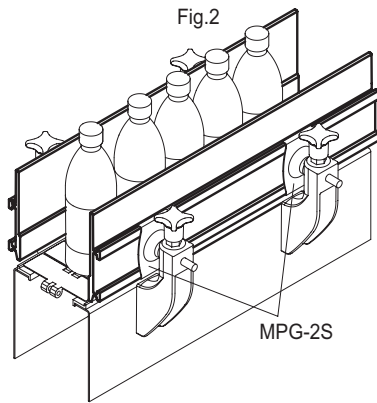
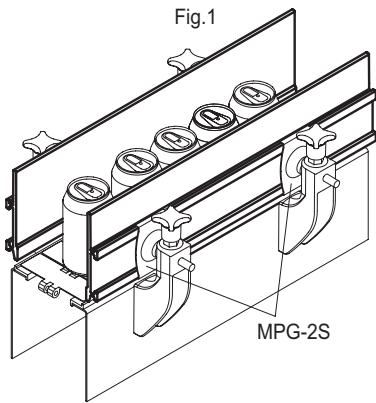
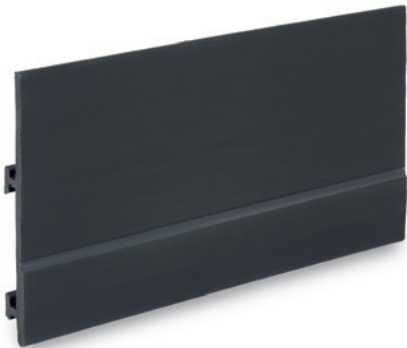
Supplied in bars of 1500 or 3000 mm length.

SPECIAL EXECUTIONS ON REQUEST

Guide rails in different colours.

ACCESSORIES ON REQUEST

Guide rail clamps MPG-2S.



GLC-20

Code	Description	L	ΔΔ
419195	GLC-138-20-1500	1500	1650
419191	GLC-138-20-3000	3000	3300

GLC-40

Code	Description	L	ΔΔ
419194	GLC-138-40-1500	1500	1650
419192	GLC-138-40-3000	3000	3300

Guide rail clamps

Technopolymer and stainless steel

MATERIAL

Glass-fibre reinforced polyamide based (PA) technopolymer, black colour, matte finish.

STANDARD EXECUTIONS

AISI 304 stainless steel washers.

- **MPG-2T**: housings for standard trapezoidal guides with housing for clamping nut (M10).
- **MPG-2T-P**: housings for standard trapezoidal guides, with AISI 304 stainless steel pin and clamping nut (M10).
- **MPG-2C**: housings for round guides with housing for clamping nut (M10).
- **MPG-2C-P**: housings for round guides, with AISI 304 stainless steel pin and clamping nut (M10).
- **MPG-2R**: housings for rectangular guides with housing for clamping nut (M10).
- **MPG-2R-P**: housings for rectangular guides, with AISI 304 stainless steel pin and clamping nut (M10).

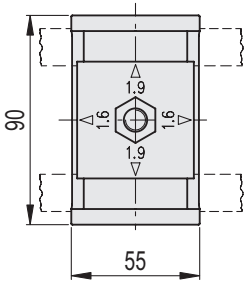
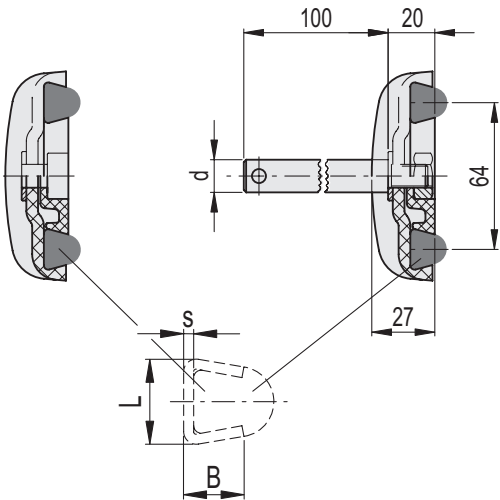
FEATURES AND APPLICATIONS

MPG-2T and MPG-2T-P executions can be used with the side guides having an AISI 304 stainless steel bracket of thickness 1.5 or 2 mm, simply rotating the rear plate by 90°.



MPG-2T

MPG-2T-P



s	B	L
1.5	17.5	16
2	18	17

MPG-2T
MPG-2T-P

STAINLESS STEEL

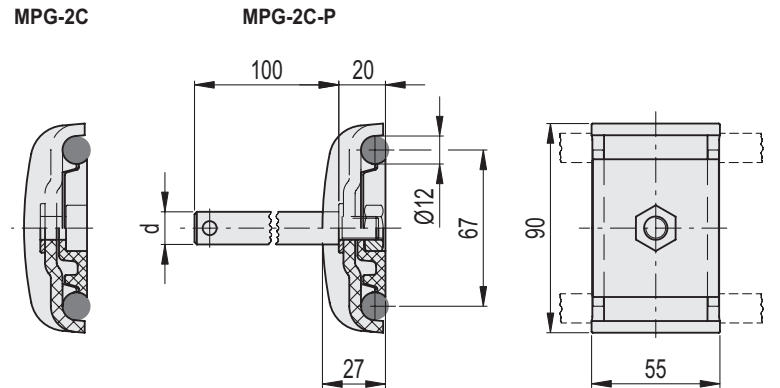
Code	Description	d	⚖
419611	MPG-2T	-	67
419684	MPG-2T-P12	12	204
419685	MPG-2T-P14	14	203
419686	MPG-2T-P16	16	202

MPG-2C

MPG-2C-P

STAINLESS STEEL

Code	Description	d	⚖
419609	MPG-2C	-	68
419681	MPG-2C-P12	12	205
419682	MPG-2C-P14	14	204
419683	MPG-2C-P16	16	203

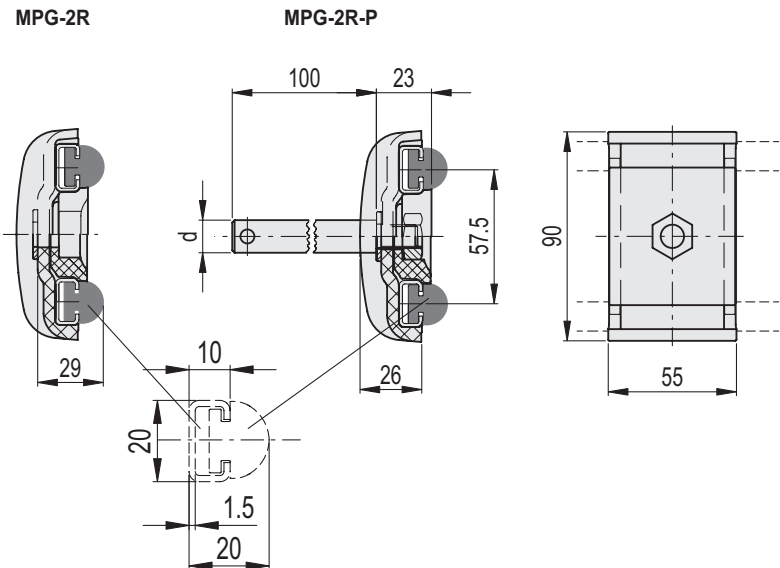


MPG-2R

MPG-2R-P

STAINLESS STEEL

Code	Description	d	⚖
419610	MPG-2R	-	72
419694	MPG-2R-P12	12	212
419695	MPG-2R-P14	14	210
419696	MPG-2R-P16	16	208

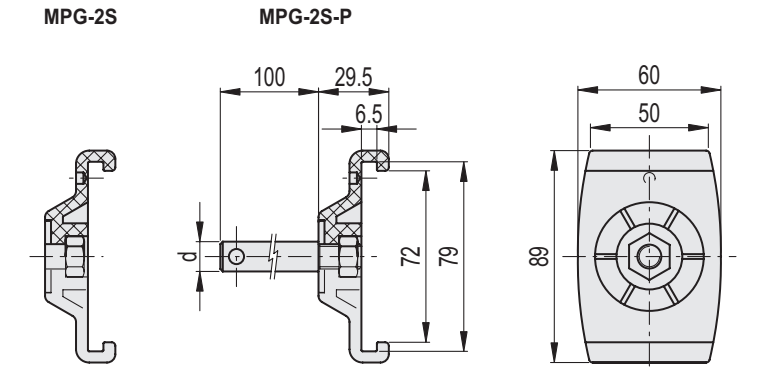


MPG-2S

MPG-2S-P

STAINLESS STEEL

Code	Description	d	⚖
419608	MPG-2S	-	90
419678	MPG-2S-P12	12	180
419679	MPG-2S-P14	14	210
419680	MPG-2S-P16	16	240



Guide rail clamps

Technopolymer and stainless steel

MATERIAL

Glass-fibre reinforced polyamide based (PA) technopolymer, black colour, matte finish.

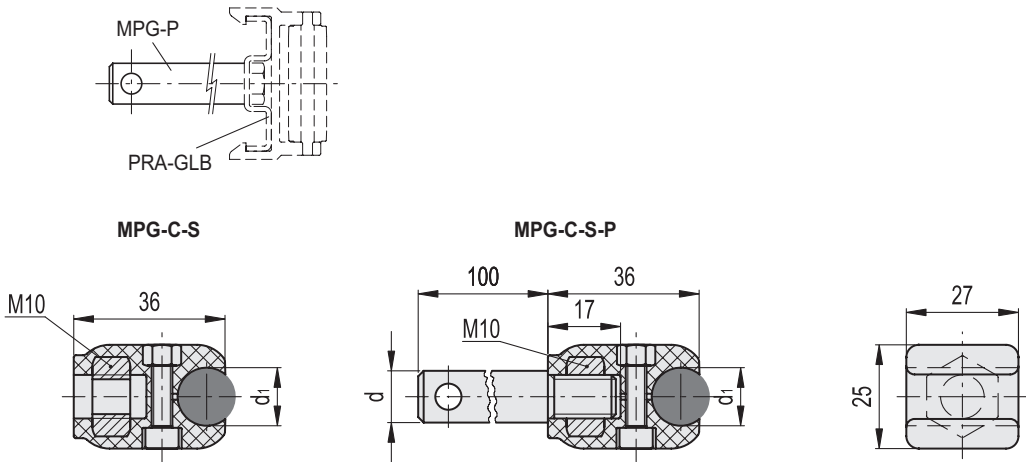
STANDARD EXECUTIONS

AISI 304 stainless steel screws and nuts.

- **MPG-C-S**: housings for round guides, without pin.
- **MPG-C-S-P**: housings for round guides with AISI 304 stainless steel pin.
- **MPG-T-S**: housings for standard trapezoidal guides, without pin.
- **MPG-T-S-P**: housings for standard trapezoidal guides with AISI 304 stainless steel pin.
- **MPG-R-S**: housings for rectangular guides, without pin.
- **MPG-R-S-P**: housings for rectangular guides with AISI 304 stainless steel pin.
- **MPG-P**: AISI 304 stainless steel guide assembly pin.

FEATURES AND APPLICATIONS

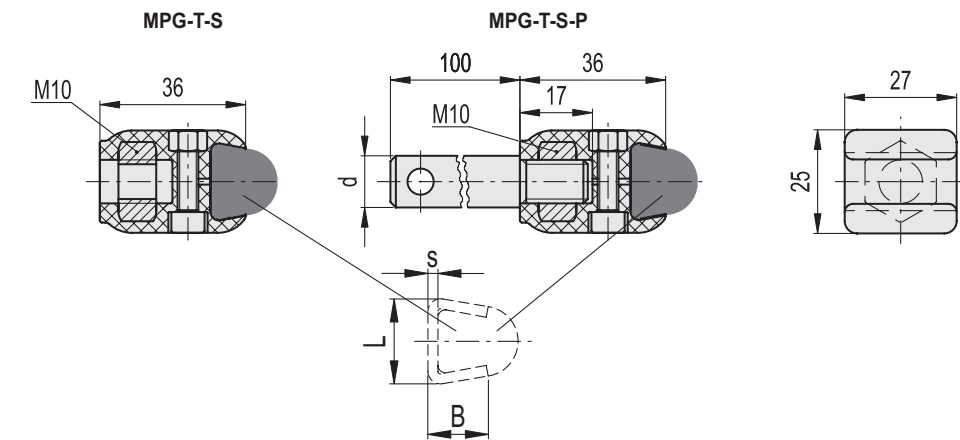
MPG-T-S and MPG-T-S-P executions can be used with the side guides having an AISI 304 stainless steel bracket of thickness 1.5 or 2 mm.



MPG-C-S MPG-C-S-P

STAINLESS STEEL

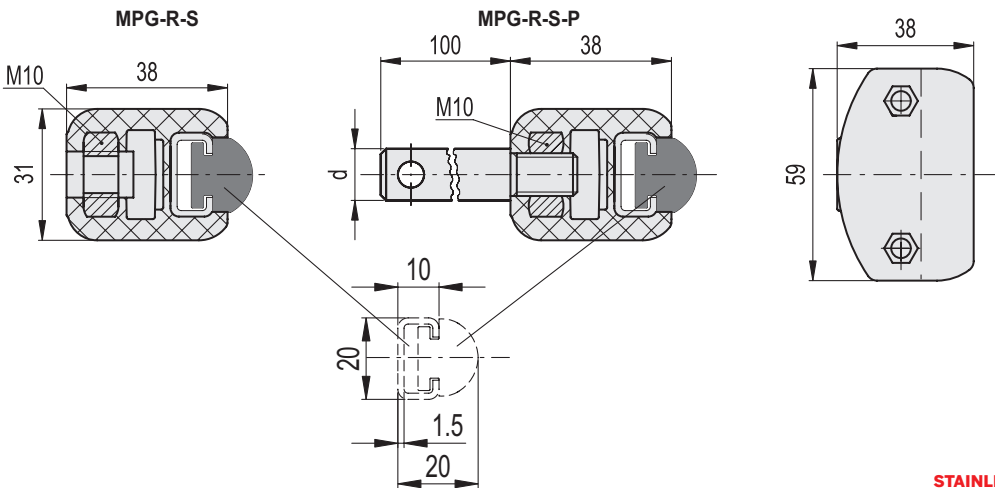
Code	Description	d	d1	⚖
419810	MPG-C-S-8	-	8	37
419811	MPG-C-S-10	-	10	36
419812	MPG-C-S-12	-	12	35
419813	MPG-C-S-14	-	14	34
419798	MPG-C-S-P12-8	12	8	128
419799	MPG-C-S-P12-10	12	10	127
419800	MPG-C-S-P12-12	12	12	126
419801	MPG-C-S-P12-14	12	14	125
419802	MPG-C-S-P14-8	14	8	162
419803	MPG-C-S-P14-10	14	10	161
419804	MPG-C-S-P14-12	14	12	160
419805	MPG-C-S-P14-14	14	14	159
419806	MPG-C-S-P16-8	16	8	198
419807	MPG-C-S-P16-10	16	10	197
419808	MPG-C-S-P16-12	16	12	196
419809	MPG-C-S-P16-14	16	14	195



MPG-T-S
MPG-T-S-P

STAINLESS STEEL

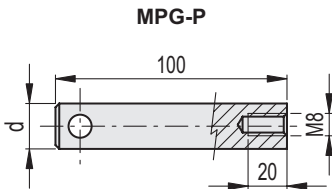
Code	Description	d	⚖
419817	MPG-T-S	-	34
419814	MPG-T-S-P12	12	125
419815	MPG-T-S-P14	14	158
419816	MPG-T-S-P16	16	195



MPG-R-S
MPG-R-S-P

STAINLESS STEEL

Code	Description	d	⚖
419827	MPG-R-S	-	47
419824	MPG-R-S-P12	12	201
419825	MPG-R-S-P14	14	235
419826	MPG-R-S-P16	16	262



MPG-P

STAINLESS STEEL

Code	Description	d	⚖
419690	MPG-P12-M8	12	90
419691	MPG-P14-M8	14	110
419692	MPG-P16-M8	16	130

Guide rail clamps

Technopolymer

MATERIAL

Glass-fibre reinforced polyamide based (PA) technopolymer, black colour, matte finish.

STANDARD EXECUTIONS

AISI 304 stainless steel cylindrical head screws with hexagon socket, nickel-plated brass nuts.

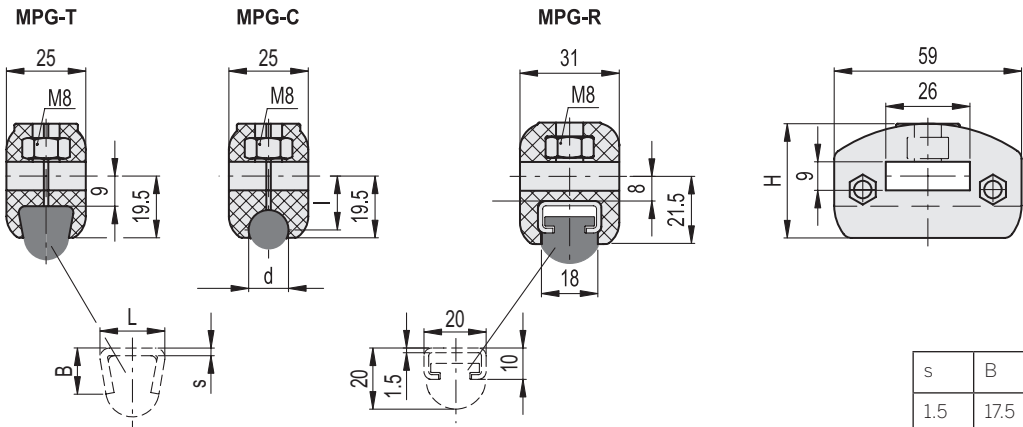
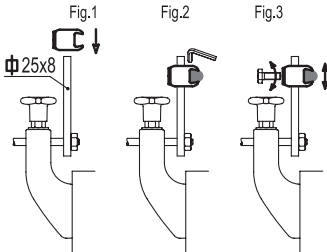
- **MPG-T**: for both the standard trapezoidal guides.
- **MPG-C**: for round guide.
- **MPG-R**: for rectangular guide.

FEATURES AND APPLICATIONS

MPG-T execution can be used with the side guides having an AISI 304 stainless steel bracket of thickness 1.5 or 2 mm.

ASSEMBLY INSTRUCTIONS

- Mount the guide rail clamp on the support bar (dimension 25x8 mm), the assembly consists in inserting the bar into the specific clamp slot (Fig.1).
- Insert the guide into the clamp housing and then clamp the screws (Fig.2).
- Set the height of the clamp and clamp by means of a M8 screw, not supplied (Fig.3).



s	B	L
1.5	17.5	16
2	18	17

STAINLESS STEEL

Code	Description	d	H	l	⚖
419688	MPG-T	-	36	-	46
419749	MPG-C-8	8	36	16	44
419788	MPG-C-10	10	36	15	45
419687	MPG-C-12	12	36	15	46
419787	MPG-C-14	14	36	15	47
419698	MPG-R	-	38	-	50

Hammer head screw

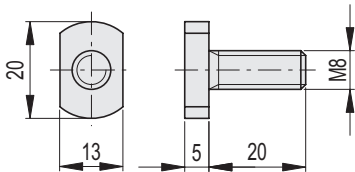
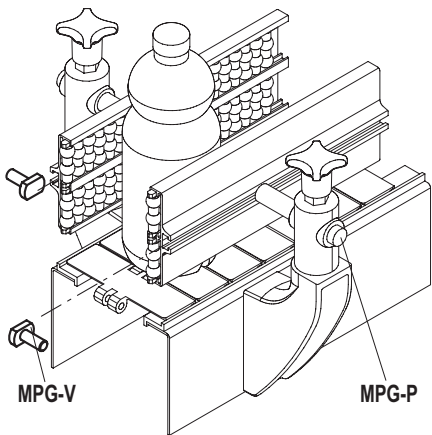
For GLA, GCA, PRA and PRB guides, steel or stainless steel

STANDARD EXECUTIONS

- **MPG-V**: zinc-plated steel.
- **MPG-V-SST**: AISI 304 stainless steel.

FEATURES AND APPLICATIONS

MPG-V hammer head screws are used to join the different types of lateral guides to the MPG-P fixing pins.



MPG-V

Code	Description	
419693	MPG-V-p-M8x20	15

MPG-V-SST

STAINLESS STEEL

Code	Description	
419697	MPG-V-SST-p-M8x20	16

Guide rail brackets

for linear positioning, technopolymer

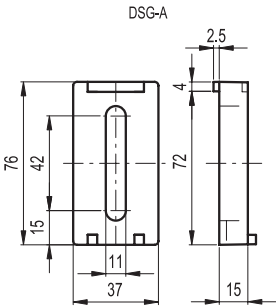
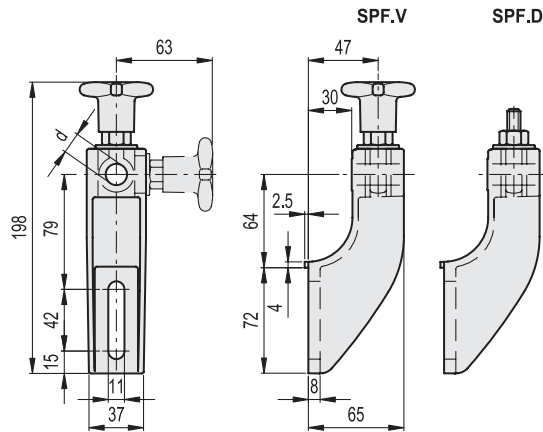
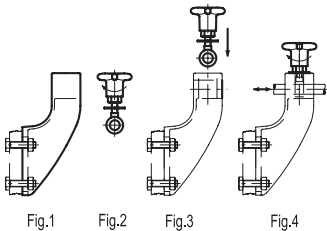
BRACKET
Glass-fibre reinforced polyamide based (PA) technopolymer, black colour, matte finish.

- STANDARD EXECUTIONS**
Eye screw and AISI 304 stainless steel washer.
- **SPF.V**: with glass-fibre reinforced technopolymer clamping knob, black colour, matte finish, nickel-plated brass hexagonal end for clamping by means of a key, threaded hole.
 - **SPF.D**: without knob, with AISI 304 stainless steel clamping nut.

FEATURES AND APPLICATIONS
Particularly suitable when a linear positioning of the guide rail is required.
The vertical or horizontal positioning of the eye screw improves the assembly where necessary.
Maximum tightening torque for screw assembly 39 Nm.

ACCESSORIES ON REQUEST
Spacer for guide rail bracket DSG-A (code 419676), in glass-fibre reinforced technopolymer, black colour, matte finish.

- ASSEMBLY INSTRUCTIONS**
- Fit the guide rail bracket (Fig. 1).
 - Insert the washer into the eye screw and screw either the knob or the nut (Fig. 2).
 - Insert the eye in its housing either in the horizontal or vertical position (Fig. 3).
 - Insert the guide pin in its clamping hole, set the linear positioning and then fasten (Fig. 4).



SPF.V		STAINLESS STEEL	
Code	Description	d Pin	⚖
419652	SPF.V-12	12	195
419654	SPF.V-14	14	190
419656	SPF.V-16	16	185

SPF.D		STAINLESS STEEL	
Code	Description	d Pin	⚖
419653	SPF.D-12	12	175
419655	SPF.D-14	14	170
419657	SPF.D-16	16	165

Guide rail brackets

for linear and angular positioning, technopolymer

BRACKET

Glass-fibre reinforced polyamide based (PA) technopolymer, black colour, matte finish.

GUIDE RAIL CYLINDER

Glass-fibre reinforced technopolymer. Black colour, matte finish.

STANDARD EXECUTION

Eye screw, AISI 304 stainless steel nut and washer.

- **SPR-A**: with lower lip.
- **SPR-B**: without lower lip.

FEATURES AND APPLICATIONS

Particularly suitable when linear and angular positioning of the guide rail is required.

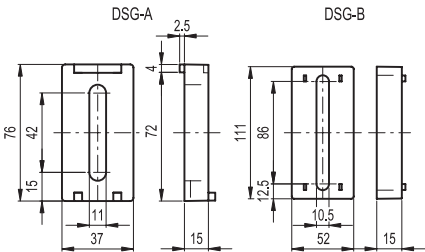
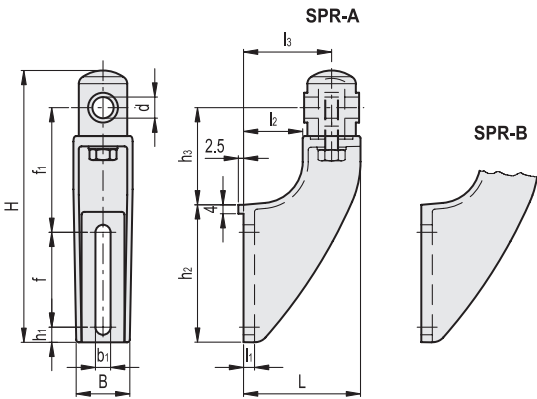
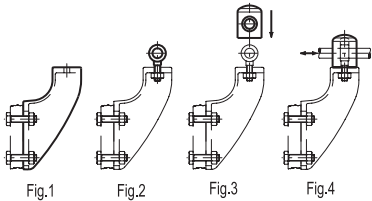
Maximum tightening torque for screw assembly 39 Nm.

ACCESSORIES ON REQUEST

Spacer for guide rail bracket DSG-A (code 419676) or DSG-B (code 419677) in glass-fibre reinforced technopolymer, black colour, matte finish.

ASSEMBLY INSTRUCTIONS

- Fit the guide rail bracket (Fig. 1).
- Insert the eye screw in the guide rail support hole and screw the relevant nut and washer (Fig. 2).
- Assemble the guide rail cylinder on the eye (Fig. 3).
- Insert the guide pin in the guide rail cylinder hole. Set its linear and angular position and then fasten the nut (Fig. 4).



SPR-A

STAINLESS STEEL

Code	Description	d Pin	H	L	B	f	f1	b1	h1	h2	h3	l1	l2	l3	△
419760	SPR.12-A	12	158	70	37	42	79	11	15	76	60	8	30	50	176
419761	SPR.14-A	14	158	70	37	42	79	11	15	76	60	8	30	50	175
419762	SPR.16-A	16	158	70	37	42	79	11	15	76	60	8	30	50	174

SPR-B

STAINLESS STEEL

Code	Description	d Pin	H	L	B	f	f1	b1	h1	h2	h3	l1	l2	l3	△
419664	SPR.12-B	12	193	85	41	69	90	11	11	100	70	8	43	64	196
419665	SPR.14-B	14	193	85	41	69	90	11	11	100	70	8	43	64	195
419666	SPR.16-B	16	193	85	41	69	90	11	11	100	70	8	43	64	194

Guide rail brackets

for linear and angular positioning, technopolymer

BRACKET
Glass-fibre reinforced polyamide based (PA) technopolymer, black colour, matte finish.

GUIDE RAIL CYLINDER
Glass-fibre reinforced technopolymer. Black colour, matte finish.

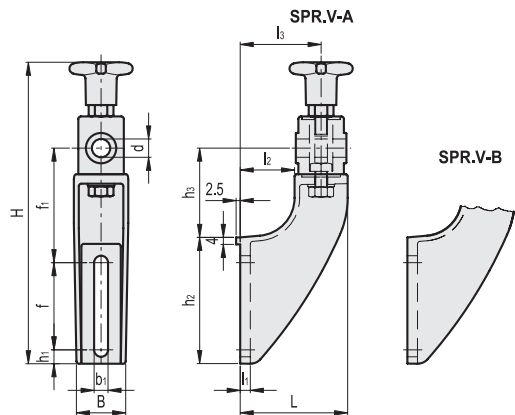
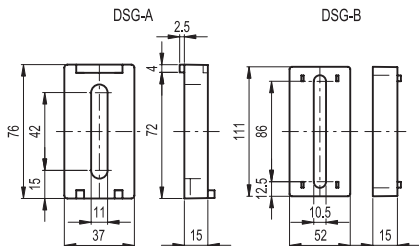
STANDARD EXECUTIONS
AISI 304 stainless steel eye screw.
Glass-fibre reinforced technopolymer clamping knob, black colour, matte finish, with nickel-plated brass hexagonal end for clamping by means of a key, threaded hole.
AISI 304 stainless steel screw, nut and washer for the fixing of guide rail cylinder to the bracket.
- **SPR.V-A**: with lower lip.
- **SPR.V-B**: without lower lip.

FEATURES
Particularly suitable when the angular and linear positioning needs to be executed in two different moments, for example when the distance between the guides has to be set more frequently than the angulation.
Maximum tightening torque for screw assembly 39 Nm.

ACCESSORIES ON REQUEST
Spacer for guide rail bracket DSG-A (code 419676) or DSG-B (code 419677) in glass-fibre reinforced technopolymer, black colour, matte finish.

SPECIAL EXECUTIONS ON REQUEST
AISI 304 stainless steel guide rail cylinder.

- ASSEMBLY INSTRUCTIONS**
- Fit the guide rail bracket (Fig. 1).
 - Assemble the guide rail cylinder to the support, with screw, nut and washer (Fig. 2).
 - Insert the washer on the eye screw and assemble the knob (Fig. 3).
 - Insert the eye in the guide rail cylinder housing (Fig. 4).
 - Insert the guide pin in the guide rail cylinder hole. Set its linear and angular position and then clamp the knob (linear positioning) and the fixing nut of guide rail cylinder (angular positioning) (Fig. 5).



STAINLESS STEEL																
Code	Description	d Pin	H	L	B	f	f1	b1	h1	h2	h3	l1	l2	l3		
419755	SPR.V-12-A	12	203	70	37	42	79	11	15	76	60	8	30	50	255	
419756	SPR.V-14-A	14	203	70	37	42	79	11	15	76	60	8	30	50	250	
419757	SPR.V-16-A	16	203	70	37	42	79	11	15	76	60	8	30	50	245	

STAINLESS STEEL																
Code	Description	d Pin	H	L	B	f	f1	b1	h1	h2	h3	l1	l2	l3		
419658	SPR.V-12-B	12	238	85	41	69	90	11	11	100	70	8	43	64	270	
419659	SPR.V-14-B	14	238	85	41	69	90	11	11	100	70	8	43	64	265	
419660	SPR.V-16-B	16	238	85	41	69	90	11	11	100	70	8	43	64	260	



elesa-ganter.com

COPYRIGHT © 2024

Elesa S.p.A. and OTTO GANTER GmbH & Co. KG
All rights reserved.

No part of this catalogue can be reproduced in whole
or in part without prior written permission from
Elesa S.p.A. or OTTO GANTER GmbH & Co. KG



Find out more on elesa-ganter.com

ELESA S.p.A.
Via Pompei 29
20900 Monza (MB)
Italy
+39 039 28 11 1
info@elesa.com
elesa.com

OTTO GANTER GmbH & Co. KG
Triburger Straße 3
78120 Furtwangen
Germany
+49 7723 65 07 0
info@ganternorm.com
ganternorm.com



DESIGNED
FOR ENGINEERING